



**SEALMASTER**<sup>®</sup>  
PERFORMANCE MOUNTED SPHERICALS

## *Unitized Spherical Roller Bearings*



  
**EMERSON**<sup>™</sup>  
Industrial Automation

EMERSON. CONSIDER IT SOLVED.<sup>™</sup>

## Another bearing breakthrough from the name you trust

For more than 70 years, the Sealmaster name has meant the very best in bearing quality, reliability and performance. Over those years we have brought an array of cutting-edge technical improvements and platform advancements to applications around the world. Since 1976, Sealmaster® Roller Pillow Block (RPB) tapered roller bearings have set the standard for performance in some of the toughest job sites.

Now Emerson Power Transmission is continuing our tradition of innovation, with the Sealmaster Unitized Spherical Roller Bearing (USRB). This new series builds on the rich heritage of past Sealmaster bearings and brings you design enhancements of an entirely new level.

The Sealmaster Unitized Spherical Roller Bearing (USRB) is available in two distinct locking systems: collar mount with bore sizes from 1 1/8" to 7"; and adapter mount with bore sizes from 1 1/8" to 8". Its race-mounted seals accommodate +/-2° misalignment. Plus, for easy installation and maintenance the new pillow blocks from 5 7/16" to 8" are shaft ready with replaceable cartridge inserts that mount more quickly than competitive versions. Just as important, the new Emerson Power Transmission™ Sealmaster performance mounted roller bearing brings you the time-tested reliability of the Sealmaster brand, a unique advantage that helps maximize uptime and minimize overall operating costs.

Our engineers have developed new geometries that let us create an innovative double-row spherical roller bearing for load capacity, misalignment and speed capabilities. The Sealmaster performance mounted roller bearing is an advanced spherical roller bearing design that combines traditional Sealmaster features and built-in benefits with even more performance and value. Among the key design features of the Sealmaster performance mounted roller bearing are two locking systems.

Sealmaster Unitized Spherical Roller Bearing (USRB) collar mount bearings are anchored to the shaft with concentric locking collars and setscrews at 120°, providing a balanced three-point contact and extra holding power.

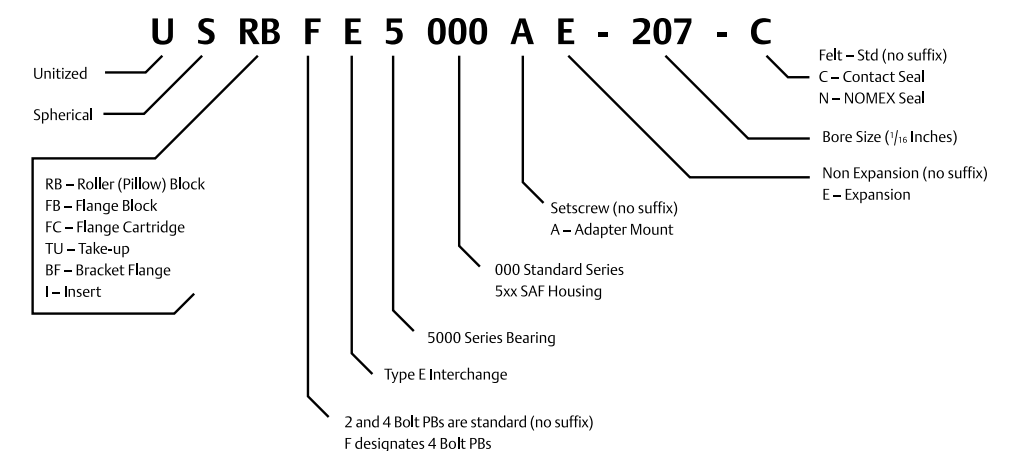
Sealmaster USRB Unitized Spherical Roller Bearing adapter mount bearings grip the shaft with an advanced adapter-lock system, for fast installation and removal. Our advanced integral locking system incorporates axial cap screws that let you mount and dismount the bearing from one side. The result: this highly engineered locking system requires less force and installs more quickly than competitive bearings. Sealmaster Unitized Spherical Roller Bearings (USRB) are also shaft ready and require only a hex key and torque wrench to install.

The new Sealmaster mounted spherical roller bearing blends traditional Sealmaster features with innovative technology, for exceptional performance. This combination dramatically cuts the potential for downtime and provides the kind of interchangeability, lower operating costs and reliability you need to keep your equipment – and your business – running 24/7.

## Table of Contents

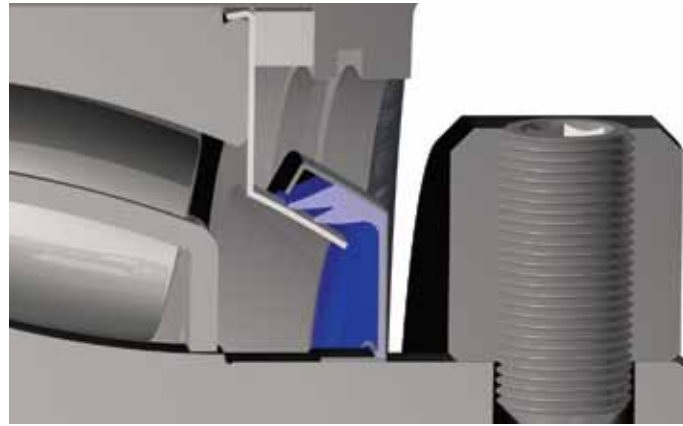
USRB Features and Benefits	3-4
Pillow Block USRB 5000 & 5000A	4-5
Pillow Block USRBF 5000 & 5000A	7-8
Pillow Block USRB 5500 & 5500A	7-8
Flange Block USFB 5000 & 5000A	9-10
Flange Cartridge USFC 5000 & 5000A	11-12
Flange Bracket USBF 5000 & 5000A	11-12
Take-Up USTU 5000 & 5000A	13-14
Pillow Block USRBE 5000 & 5000A	15-16
Flange Block USFBE 5000 & 5000A	17-18
Flange Cartridge USFCE 5000 & 5000A	19-20
Flange Block USF3B 5000	21
Spherical Inserts USI 5000 & 5000A	22
Engineering Section	23-34
General Engineering	23-28
Lubrication	29
Vibration Analysis	30
Installation	31-34

## Sealmaster USRB Nomenclature



**Felt Seal**

Felt seal (U.S. patent #5002406) – The Sealmaster patented felt-lined rotating flinger seal, mounted between races, allows up to +/-2° of misalignment. The outer member rotates with the inner race, to help direct contamination away from the seal. Due to the unique spherical geometric design of the seal contact areas, sealing effectiveness is maintained throughout the entire specified range of misalignment. The patented felt design provides a tight labyrinth seal, which acts as a filter to help exclude foreign material and has low friction. The seal stampings are black oxide coated for corrosion resistance.



**Contact Seal**

Contact seal (patent pending) – The Sealmaster double-lip contact seal, mounted between races, also allows up to +/-2° of misalignment. The outer member rotates with the inner race, to help direct contamination away from the seal. Due to the unique spherical geometric design of the seal contact areas, sealing effectiveness is maintained throughout the entire specified range of misalignment. This seal operates with low drag, making it a smart choice for dry, dusty or wet conditions. The rotating double-lip hinge seal design delivers exceptional limiting speed.

**Misalignment**

The arrangement of rolling elements and races in Sealmaster Mounted Spherical Roller Bearings compensates for +/-2° of misalignment – up to twice an SAF – while maintaining catalog load ratings and sealing effectiveness. The Sealmaster Mounted Spherical Roller Bearing has a replaceable cartridge insert that consists of a double-row spherical roller bearing with patented race-mounted seals. These integrally sealed, one-piece cartridge inserts can also be used for mounting in cylindrical-bore housings for an even wider range of applications, including extruders, mill equipment and coating lines, where space is at a premium.

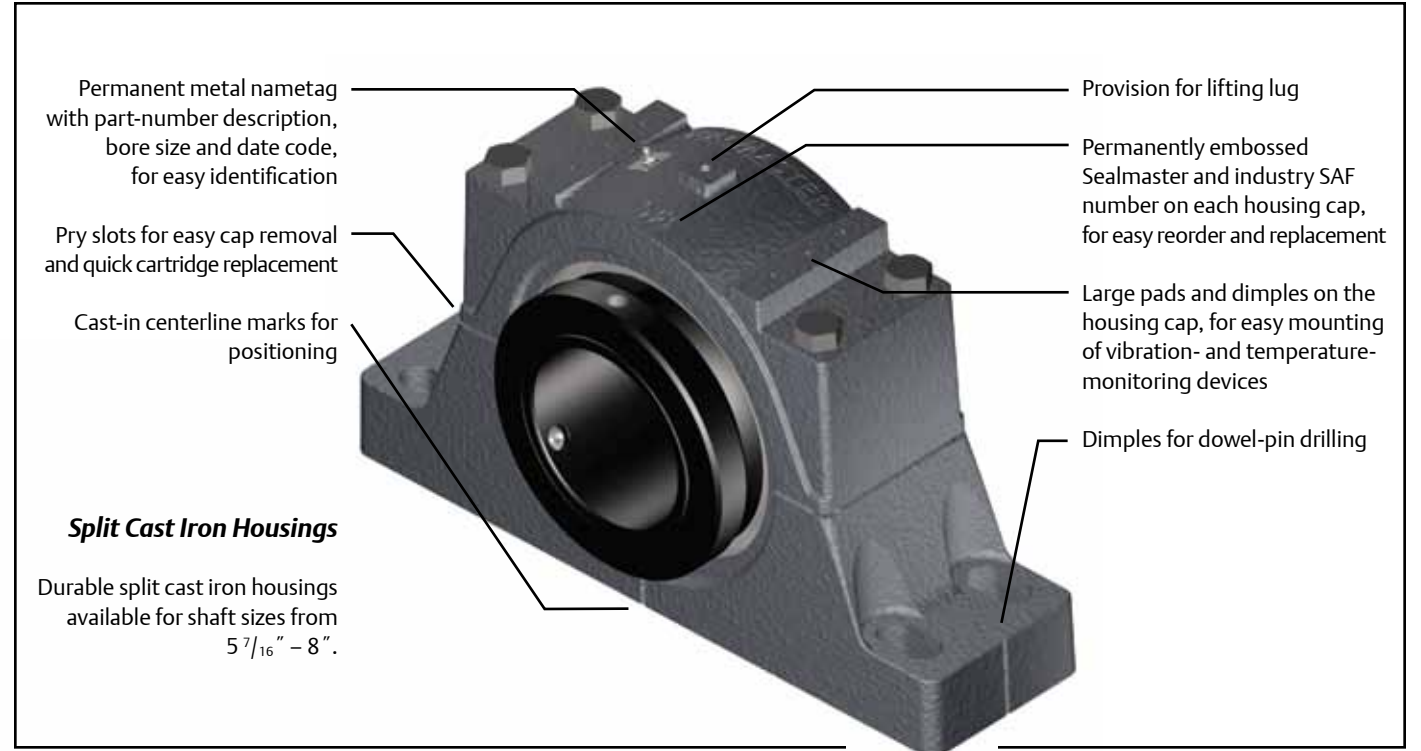
**One-Piece Housing**

Durable one-piece cast-iron housings for shaft sizes from 1 1/8"–5". Ductile iron housings with type E mounting dimensions from 1 15/16"–4".



**Wide Outer Race**

The wide outer race, coupled with innovative rolling-element geometries, provides higher load capacity and more insert stability in the housing. More important, the wide outer race provides for better sealing and creates a large internal grease chamber, for more grease capacity. The outer races are black oxide coated for corrosion protection. All Sealmaster Unitized Spherical Roller Bearings (USRB) contain high-capacity double-row spherical roller bearings designed to handle a combination of loads. New geometries developed by Sealmaster engineers result in an innovative double-row spherical roller bearing with load capacity, misalignment and speed capability.



Permanent metal nametag with part-number description, bore size and date code, for easy identification

Pry slots for easy cap removal and quick cartridge replacement

Cast-in centerline marks for positioning

**Split Cast Iron Housings**

Durable split cast iron housings available for shaft sizes from 5 7/16" – 8".

Provision for lifting lug

Permanently embossed Sealmaster and industry SAF number on each housing cap, for easy reorder and replacement

Large pads and dimples on the housing cap, for easy mounting of vibration- and temperature-monitoring devices

Dimples for dowel-pin drilling

**Collar Mount**

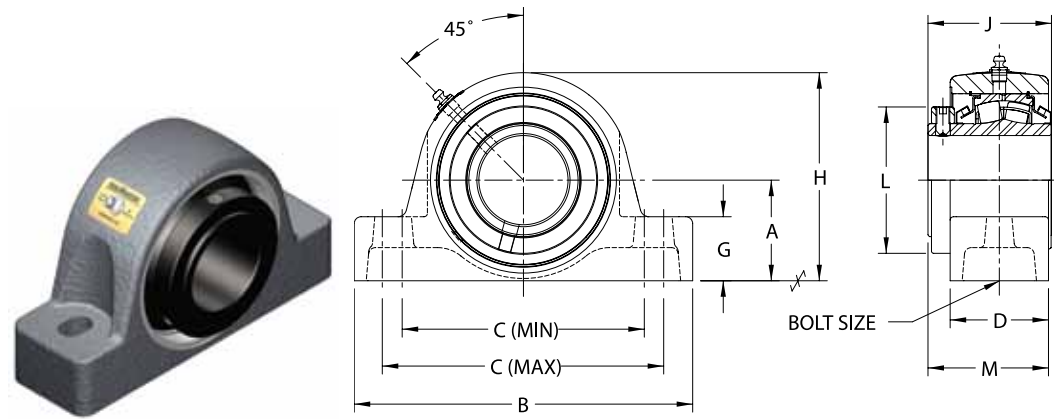
Sealmaster performance mounted roller bearing pillow blocks are anchored to the shaft with two concentric locking collars and setscrews at 120°, providing a balanced three-point contact and extra holding power.

**Adapter Mount\***

The Sealmaster performance mounted roller bearings grip the shaft with an advanced adapter mount system (patent pending), for fast installation and removal. Our advanced integral locking system incorporates axial cap screws that let you mount and dismount the bearing from one side. The result: this highly engineered locking system requires less force and installs up to six times more quickly than competitive bearings. Sealmaster Mounted Spherical Roller Bearings are also shaft ready and require only a hex key and torque wrench to install; no special tools or feeler gauges are required.

\*Shown with Adapter Mount System

**Pillow Block**  
USRB 5000

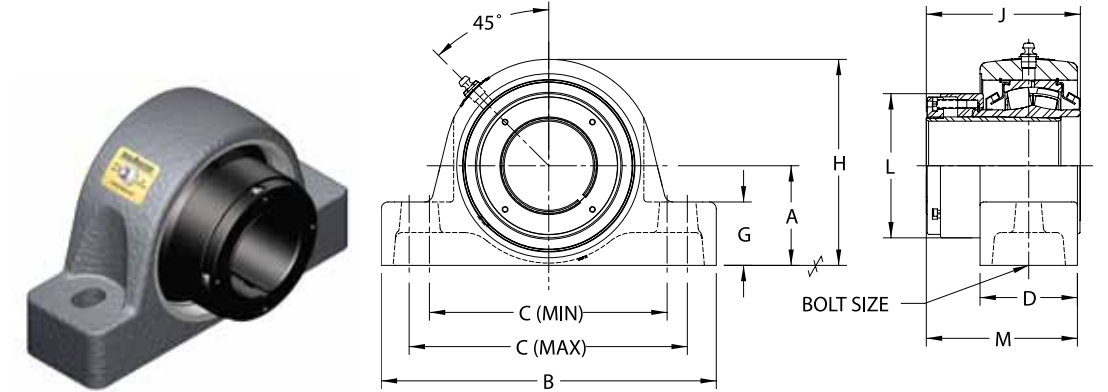


**Two Bolt Base, Collar Mount**

Nomenclature	Shaft Diameter (INCHES)	A	B	C		D	G	H	J	L	M*	Bolt Size
				MIN.	MAX.							
USRB5000-102	1 1/8											
USRB5000-103	1 3/16	1 3/4	6 5/16	4 1/2	5	2 3/16	1 1/16	3 3/4	2 3/4	2 49/64	2 3/4	3/8
USRB5000-104	1 1/4											
USRB5000-106	1 3/8											
USRB5000-107	1 7/16	1 7/8	6 7/8	4 11/16	5 5/16	2 3/16	1 3/16	3 7/8	2 3/4	2 49/64	2 3/4	1/2
USRB5000-108	1 1/2											
USRB5000-111	1 11/16	2 1/8	7 3/8	5 3/16	5 13/16	2 3/16	1 5/16	4 1/4	2 7/8	2 3/4	2 51/64	1/2
USRB5000-112	1 3/4											
USRB5000-115	1 15/16	2 1/4	8 3/8	5 5/16	6 9/16	2 3/16	1 3/8	4 9/16	2 7/8	3	2 25/32	5/8
USRB5000-200	2											
USRB5000-203	2 3/16	2 1/2	8 7/8	6 9/16	7 1/16	2 7/16	1 5/8	5	3 1/8	3 1/4	3 5/64	5/8
USRB5000-207	2 7/16	2 3/4	9 1/4	6 13/16	7 7/16	2 11/16	1 3/4	5 11/16	3 3/8	4	3 9/32	5/8
USRB5000-208	2 1/2											
USRB5000-211	2 11/16											
USRB5000-212	2 3/4	3 1/4	10 7/16	7 13/16	8 7/16	2 13/16	2 1/4	6 7/16	3 7/8	4 17/32	3 3/4	3/4
USRB5000-215	2 15/16											
USRB5000-300	3											
USRB5000-303	3 3/16											
USRB5000-307	3 7/16	3 3/4	13	9 1/4	10 3/4	3 3/16	2 1/4	7 1/2	4 15/32	5 5/16	4 15/64	7/8
USRB5000-308	3 1/2											
USRB5000-311	3 11/16											
USRB5000-315	3 15/16	4 1/8	14 1/4	10	11 3/4	3 9/16	2 1/2	8 7/16	4 15/16	6	4 23/32	1
USRB5000-400	4											

\* For expansion bearings, this dimension can increase by the corresponding value listed in Table 7 on page 28.

**Pillow Block**  
USRB 5000A

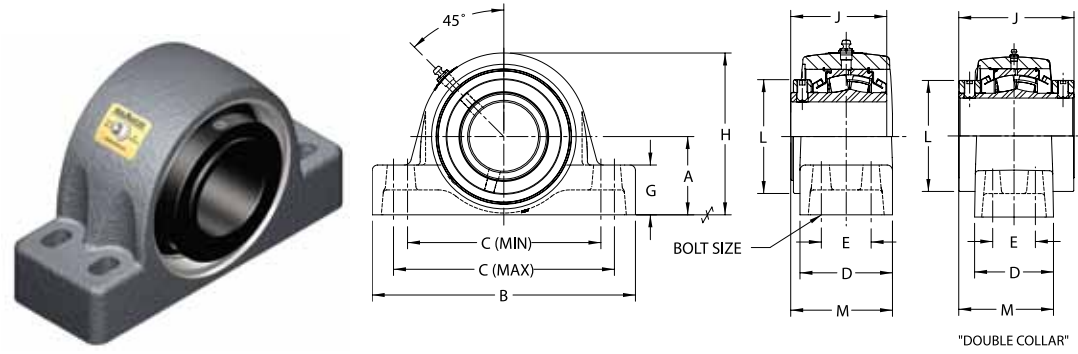


**Two Bolt Base, Adapter Mount**

Nomenclature	Shaft Diameter (INCHES)	A	B	C		D	G	H	J	L	M*	Bolt Size
				MIN.	MAX.							
USRB5000A-102	1 1/8											
USRB5000A-103	1 3/16	1 3/4	6 5/16	4 1/2	5	2 3/16	1 1/16	3 3/4	3 23/64	2 47/64	3 11/32	3/8
USRB5000A-104	1 1/4											
USRB5000A-106	1 3/8											
USRB5000A-107	1 7/16	1 7/8	6 7/8	4 11/16	5 5/16	2 3/16	1 3/16	3 7/8	3 23/64	2 47/64	3 11/32	1/2
USRB5000A-108	1 1/2											
USRB5000A-111	1 11/16	2 1/8	7 3/8	5 3/16	5 13/16	2 3/16	1 5/16	4 1/4	3 29/64	2 63/64	3 3/8	1/2
USRB5000A-112	1 3/4											
USRB5000A-115	1 15/16	2 1/4	8 3/8	5 5/16	6 9/16	2 3/16	1 3/8	4 9/16	3 1/2	3 3/16	3 13/32	5/8
USRB5000A-200	2											
USRB5000A-203	2 3/16	2 1/2	8 7/8	6 9/16	7 1/16	2 7/16	1 5/8	5	3 57/64	3 29/64	3 27/32	5/8
USRB5000A-207	2 7/16	2 3/4	9 1/4	6 13/16	7 7/16	2 11/16	1 3/4	5 11/16	4 5/16	3 63/64	4 7/32	5/8
USRB5000A-208	2 1/2											
USRB5000A-211	2 11/16											
USRB5000A-212	2 3/4	3 1/4	10 7/16	7 13/16	8 7/16	2 13/16	2 1/4	6 7/16	4 31/64	4 25/64	4 3/8	3/4
USRB5000A-215	2 15/16											
USRB5000A-300	3											
USRB5000A-303	3 3/16											
USRB5000A-307	3 7/16	3 3/4	13	9 1/4	10 3/4	3 3/16	2 1/4	7 1/2	5 35/64	5 15/32	5 21/64	7/8
USRB5000A-308	3 1/2											
USRB5000A-311	3 11/16											
USRB5000A-315	3 15/16	4 1/8	14 1/4	10	11 3/4	3 9/16	2 1/2	8 7/16	5 15/16	5 13/16	5 23/32	1
USRB5000A-400	4											

\* For expansion bearings, this dimension can increase by the corresponding value listed in Table 7 on page 28.

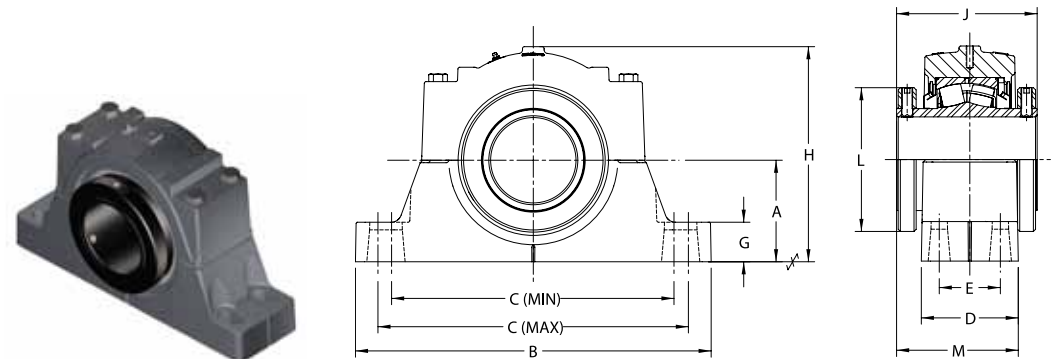
## Pillow Block USRBF 5000



### Four Bolt Base, Collar Mount

Nomenclature	Shaft Diameter (INCHES)	A	B	C		D	E	G	H	J	L	M*	Bolt Size
				Min.	Max.								
USRBF5000-207	2 <sup>7</sup> / <sub>16</sub>	2 <sup>3</sup> / <sub>4</sub>	9 <sup>1</sup> / <sub>4</sub>	6 <sup>7</sup> / <sub>8</sub>	7 <sup>5</sup> / <sub>8</sub>	3 <sup>1</sup> / <sub>4</sub>	1 <sup>3</sup> / <sub>4</sub>	1 <sup>3</sup> / <sub>4</sub>	5 <sup>11</sup> / <sub>16</sub>	3 <sup>3</sup> / <sub>8</sub>	4	3 <sup>43</sup> / <sub>64</sub>	1/2
USRBF5000-208	2 <sup>1</sup> / <sub>2</sub>	2 <sup>3</sup> / <sub>4</sub>	9 <sup>1</sup> / <sub>4</sub>	6 <sup>7</sup> / <sub>8</sub>	7 <sup>5</sup> / <sub>8</sub>	3 <sup>1</sup> / <sub>4</sub>	1 <sup>3</sup> / <sub>4</sub>	1 <sup>3</sup> / <sub>4</sub>	5 <sup>11</sup> / <sub>16</sub>	3 <sup>3</sup> / <sub>8</sub>	4	3 <sup>43</sup> / <sub>64</sub>	1/2
USRBF5000-211	2 <sup>11</sup> / <sub>16</sub>	3 <sup>1</sup> / <sub>4</sub>	10 <sup>7</sup> / <sub>16</sub>	7 <sup>7</sup> / <sub>8</sub>	8 <sup>3</sup> / <sub>8</sub>	3 <sup>3</sup> / <sub>4</sub>	1 <sup>7</sup> / <sub>8</sub>	2 <sup>1</sup> / <sub>4</sub>	6 <sup>7</sup> / <sub>16</sub>	3 <sup>7</sup> / <sub>8</sub>	4 <sup>17</sup> / <sub>32</sub>	4 <sup>19</sup> / <sub>64</sub>	5/8
USRBF5000-212	2 <sup>3</sup> / <sub>4</sub>	3 <sup>1</sup> / <sub>4</sub>	10 <sup>7</sup> / <sub>16</sub>	7 <sup>7</sup> / <sub>8</sub>	8 <sup>3</sup> / <sub>8</sub>	3 <sup>3</sup> / <sub>4</sub>	1 <sup>7</sup> / <sub>8</sub>	2 <sup>1</sup> / <sub>4</sub>	6 <sup>7</sup> / <sub>16</sub>	3 <sup>7</sup> / <sub>8</sub>	4 <sup>17</sup> / <sub>32</sub>	4 <sup>19</sup> / <sub>64</sub>	5/8
USRBF5000-215	2 <sup>15</sup> / <sub>16</sub>	3 <sup>1</sup> / <sub>4</sub>	10 <sup>7</sup> / <sub>16</sub>	7 <sup>7</sup> / <sub>8</sub>	8 <sup>3</sup> / <sub>8</sub>	3 <sup>3</sup> / <sub>4</sub>	1 <sup>7</sup> / <sub>8</sub>	2 <sup>1</sup> / <sub>4</sub>	6 <sup>7</sup> / <sub>16</sub>	3 <sup>7</sup> / <sub>8</sub>	4 <sup>17</sup> / <sub>32</sub>	4 <sup>19</sup> / <sub>64</sub>	5/8
USRBF5000-300	3	3 <sup>1</sup> / <sub>4</sub>	10 <sup>7</sup> / <sub>16</sub>	7 <sup>7</sup> / <sub>8</sub>	8 <sup>3</sup> / <sub>8</sub>	3 <sup>3</sup> / <sub>4</sub>	1 <sup>7</sup> / <sub>8</sub>	2 <sup>1</sup> / <sub>4</sub>	6 <sup>7</sup> / <sub>16</sub>	3 <sup>7</sup> / <sub>8</sub>	4 <sup>17</sup> / <sub>32</sub>	4 <sup>19</sup> / <sub>64</sub>	5/8
USRBF5000-303	3 <sup>3</sup> / <sub>16</sub>	3 <sup>3</sup> / <sub>4</sub>	13	9 <sup>1</sup> / <sub>4</sub>	10 <sup>3</sup> / <sub>4</sub>	3 <sup>7</sup> / <sub>8</sub>	2	2 <sup>1</sup> / <sub>4</sub>	7 <sup>1</sup> / <sub>2</sub>	4 <sup>15</sup> / <sub>32</sub>	5 <sup>5</sup> / <sub>16</sub>	4 <sup>19</sup> / <sub>32</sub>	3/4
USRBF5000-307	3 <sup>7</sup> / <sub>16</sub>	3 <sup>3</sup> / <sub>4</sub>	13	9 <sup>1</sup> / <sub>4</sub>	10 <sup>3</sup> / <sub>4</sub>	3 <sup>7</sup> / <sub>8</sub>	2	2 <sup>1</sup> / <sub>4</sub>	7 <sup>1</sup> / <sub>2</sub>	4 <sup>15</sup> / <sub>32</sub>	5 <sup>5</sup> / <sub>16</sub>	4 <sup>19</sup> / <sub>32</sub>	3/4
USRBF5000-308	3 <sup>1</sup> / <sub>2</sub>	3 <sup>3</sup> / <sub>4</sub>	13	9 <sup>1</sup> / <sub>4</sub>	10 <sup>3</sup> / <sub>4</sub>	3 <sup>7</sup> / <sub>8</sub>	2	2 <sup>1</sup> / <sub>4</sub>	7 <sup>1</sup> / <sub>2</sub>	4 <sup>15</sup> / <sub>32</sub>	5 <sup>5</sup> / <sub>16</sub>	4 <sup>19</sup> / <sub>32</sub>	3/4
USRBF5000-311	3 <sup>11</sup> / <sub>16</sub>	4 <sup>1</sup> / <sub>4</sub>	15 <sup>1</sup> / <sub>4</sub>	11	13	4 <sup>1</sup> / <sub>2</sub>	2 <sup>1</sup> / <sub>4</sub>	2 <sup>5</sup> / <sub>8</sub>	8 <sup>9</sup> / <sub>16</sub>	4 <sup>15</sup> / <sub>16</sub>	6	5 <sup>13</sup> / <sub>64</sub>	3/4
USRBF5000-315	3 <sup>15</sup> / <sub>16</sub>	4 <sup>1</sup> / <sub>4</sub>	15 <sup>1</sup> / <sub>4</sub>	11	13	4 <sup>1</sup> / <sub>2</sub>	2 <sup>1</sup> / <sub>4</sub>	2 <sup>5</sup> / <sub>8</sub>	8 <sup>9</sup> / <sub>16</sub>	4 <sup>15</sup> / <sub>16</sub>	6	5 <sup>13</sup> / <sub>64</sub>	3/4
USRBF5000-400	4	4 <sup>1</sup> / <sub>4</sub>	15 <sup>1</sup> / <sub>4</sub>	11	13	4 <sup>1</sup> / <sub>2</sub>	2 <sup>1</sup> / <sub>4</sub>	2 <sup>5</sup> / <sub>8</sub>	8 <sup>9</sup> / <sub>16</sub>	4 <sup>15</sup> / <sub>16</sub>	6	5 <sup>13</sup> / <sub>64</sub>	3/4
USRB5000-407	4 <sup>7</sup> / <sub>16</sub>	4 <sup>3</sup> / <sub>4</sub>	16 <sup>3</sup> / <sub>64</sub>	13	14	4 <sup>5</sup> / <sub>8</sub>	2 <sup>1</sup> / <sub>2</sub>	2 <sup>3</sup> / <sub>4</sub>	9 <sup>3</sup> / <sub>8</sub>	6 <sup>3</sup> / <sub>4</sub>	6 <sup>1</sup> / <sub>2</sub>	5 <sup>33</sup> / <sub>64</sub>	3/4
USRB5000-408	4 <sup>1</sup> / <sub>2</sub>	4 <sup>3</sup> / <sub>4</sub>	16 <sup>3</sup> / <sub>64</sub>	13	14	4 <sup>5</sup> / <sub>8</sub>	2 <sup>1</sup> / <sub>2</sub>	2 <sup>3</sup> / <sub>4</sub>	9 <sup>3</sup> / <sub>8</sub>	6 <sup>3</sup> / <sub>4</sub>	6 <sup>1</sup> / <sub>2</sub>	5 <sup>33</sup> / <sub>64</sub>	3/4
USRB5000-415	4 <sup>15</sup> / <sub>16</sub>	5 <sup>1</sup> / <sub>2</sub>	18 <sup>1</sup> / <sub>2</sub>	15	16	5 <sup>1</sup> / <sub>8</sub>	2 <sup>3</sup> / <sub>4</sub>	3	10 <sup>7</sup> / <sub>8</sub>	7 <sup>27</sup> / <sub>64</sub>	7	6 <sup>3</sup> / <sub>32</sub>	7/8

## Pillow Block USRB 5500

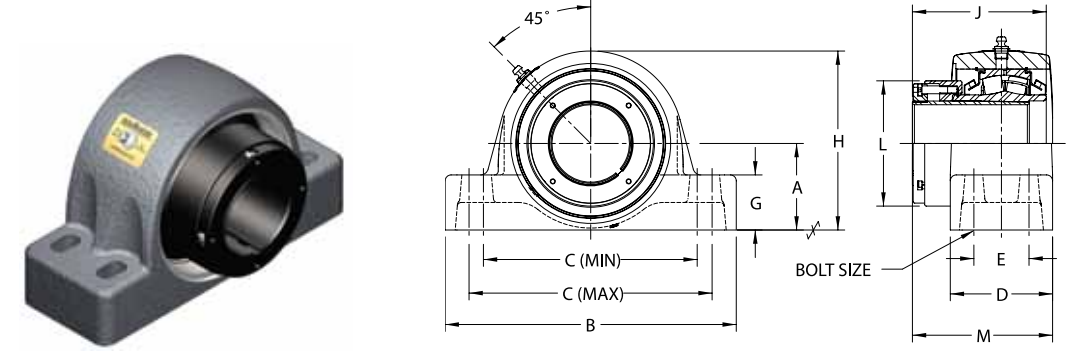


### Four Bolt Base, Collar Mount

Nomenclature	Shaft Diameter (INCHES)	A	B	C		D	E	G	H	J	L	M*	Bolt Size
				Min.	Max.								
USRB5532-507	5 <sup>7</sup> / <sub>16</sub>	6 <sup>11</sup> / <sub>16</sub>	22	17 <sup>3</sup> / <sub>8</sub>	19 <sup>1</sup> / <sub>4</sub>	6 <sup>1</sup> / <sub>4</sub>	3 <sup>3</sup> / <sub>4</sub>	2 <sup>5</sup> / <sub>8</sub>	13 <sup>17</sup> / <sub>32</sub>	9 <sup>1</sup> / <sub>32</sub>	8 <sup>1</sup> / <sub>2</sub>	7 <sup>27</sup> / <sub>32</sub>	1
USRB5534-515	5 <sup>15</sup> / <sub>16</sub>	7 <sup>1</sup> / <sub>16</sub>	24 <sup>3</sup> / <sub>4</sub>	19 <sup>3</sup> / <sub>8</sub>	21 <sup>5</sup> / <sub>8</sub>	6 <sup>3</sup> / <sub>4</sub>	4 <sup>1</sup> / <sub>4</sub>	2 <sup>3</sup> / <sub>4</sub>	14 <sup>31</sup> / <sub>32</sub>	9 <sup>25</sup> / <sub>32</sub>	10	8 <sup>15</sup> / <sub>32</sub>	1
USRB5536-607	6 <sup>7</sup> / <sub>16</sub>	7 <sup>1</sup> / <sub>2</sub>	26 <sup>3</sup> / <sub>4</sub>	20 <sup>7</sup> / <sub>8</sub>	23 <sup>5</sup> / <sub>8</sub>	7 <sup>1</sup> / <sub>8</sub>	4 <sup>5</sup> / <sub>8</sub>	3	15 <sup>61</sup> / <sub>64</sub>	10 <sup>1</sup> / <sub>2</sub>	11	9 <sup>1</sup> / <sub>64</sub>	1
USRB5536-608	6 <sup>1</sup> / <sub>2</sub>	7 <sup>1</sup> / <sub>2</sub>	26 <sup>3</sup> / <sub>4</sub>	20 <sup>7</sup> / <sub>8</sub>	23 <sup>5</sup> / <sub>8</sub>	7 <sup>1</sup> / <sub>8</sub>	4 <sup>5</sup> / <sub>8</sub>	3	15 <sup>61</sup> / <sub>64</sub>	10 <sup>1</sup> / <sub>2</sub>	11	9 <sup>1</sup> / <sub>64</sub>	1
USRB5538-615	6 <sup>15</sup> / <sub>16</sub>	7 <sup>7</sup> / <sub>8</sub>	28	21 <sup>5</sup> / <sub>8</sub>	24 <sup>3</sup> / <sub>8</sub>	7 <sup>1</sup> / <sub>2</sub>	4 <sup>1</sup> / <sub>2</sub>	3 <sup>1</sup> / <sub>8</sub>	16 <sup>9</sup> / <sub>16</sub>	10 <sup>1</sup> / <sub>2</sub>	11	9 <sup>13</sup> / <sub>64</sub>	1 <sup>1</sup> / <sub>4</sub>
USRB5538-700	7	7 <sup>7</sup> / <sub>8</sub>	28	21 <sup>5</sup> / <sub>8</sub>	24 <sup>3</sup> / <sub>8</sub>	7 <sup>1</sup> / <sub>2</sub>	4 <sup>1</sup> / <sub>2</sub>	3 <sup>1</sup> / <sub>8</sub>	16 <sup>9</sup> / <sub>16</sub>	10 <sup>1</sup> / <sub>2</sub>	11	9 <sup>13</sup> / <sub>64</sub>	1 <sup>1</sup> / <sub>4</sub>

\* For expansion bearings, this dimension can increase by the corresponding value listed in Table 7 on page 28.

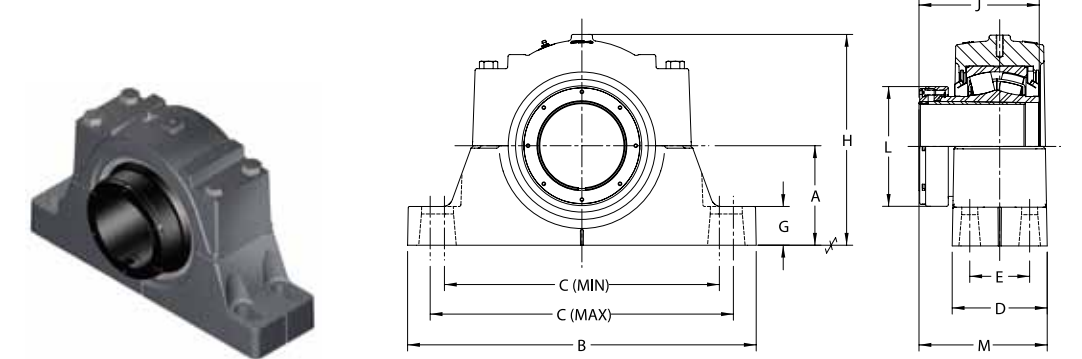
## Pillow Block USRBF 5000A



### Four Bolt Base, Adapter Mount

Nomenclature	Shaft Diameter (INCHES)	A	B	C		D	E	G	H	J	L	M*	Bolt Size
				Min.	Max.								
USRBF5000A-207	2 <sup>7</sup> / <sub>16</sub>	2 <sup>3</sup> / <sub>4</sub>	9 <sup>1</sup> / <sub>4</sub>	6 <sup>7</sup> / <sub>8</sub>	7 <sup>5</sup> / <sub>8</sub>	3 <sup>1</sup> / <sub>4</sub>	1 <sup>3</sup> / <sub>4</sub>	1 <sup>3</sup> / <sub>4</sub>	5 <sup>11</sup> / <sub>16</sub>	4 <sup>5</sup> / <sub>16</sub>	3 <sup>63</sup> / <sub>64</sub>	4 <sup>39</sup> / <sub>64</sub>	1/2
USRBF5000A-208	2 <sup>1</sup> / <sub>2</sub>	2 <sup>3</sup> / <sub>4</sub>	9 <sup>1</sup> / <sub>4</sub>	6 <sup>7</sup> / <sub>8</sub>	7 <sup>5</sup> / <sub>8</sub>	3 <sup>1</sup> / <sub>4</sub>	1 <sup>3</sup> / <sub>4</sub>	1 <sup>3</sup> / <sub>4</sub>	5 <sup>11</sup> / <sub>16</sub>	4 <sup>5</sup> / <sub>16</sub>	3 <sup>63</sup> / <sub>64</sub>	4 <sup>39</sup> / <sub>64</sub>	1/2
USRBF5000A-211	2 <sup>11</sup> / <sub>16</sub>	3 <sup>1</sup> / <sub>4</sub>	10 <sup>7</sup> / <sub>16</sub>	7 <sup>7</sup> / <sub>8</sub>	8 <sup>3</sup> / <sub>8</sub>	3 <sup>3</sup> / <sub>4</sub>	1 <sup>7</sup> / <sub>8</sub>	2 <sup>1</sup> / <sub>4</sub>	6 <sup>7</sup> / <sub>16</sub>	4 <sup>31</sup> / <sub>64</sub>	4 <sup>25</sup> / <sub>64</sub>	4 <sup>29</sup> / <sub>32</sub>	5/8
USRBF5000A-212	2 <sup>3</sup> / <sub>4</sub>	3 <sup>1</sup> / <sub>4</sub>	10 <sup>7</sup> / <sub>16</sub>	7 <sup>7</sup> / <sub>8</sub>	8 <sup>3</sup> / <sub>8</sub>	3 <sup>3</sup> / <sub>4</sub>	1 <sup>7</sup> / <sub>8</sub>	2 <sup>1</sup> / <sub>4</sub>	6 <sup>7</sup> / <sub>16</sub>	4 <sup>31</sup> / <sub>64</sub>	4 <sup>25</sup> / <sub>64</sub>	4 <sup>29</sup> / <sub>32</sub>	5/8
USRBF5000A-215	2 <sup>15</sup> / <sub>16</sub>	3 <sup>1</sup> / <sub>4</sub>	10 <sup>7</sup> / <sub>16</sub>	7 <sup>7</sup> / <sub>8</sub>	8 <sup>3</sup> / <sub>8</sub>	3 <sup>3</sup> / <sub>4</sub>	1 <sup>7</sup> / <sub>8</sub>	2 <sup>1</sup> / <sub>4</sub>	6 <sup>7</sup> / <sub>16</sub>	4 <sup>31</sup> / <sub>64</sub>	4 <sup>25</sup> / <sub>64</sub>	4 <sup>29</sup> / <sub>32</sub>	5/8
USRBF5000A-300	3	3 <sup>1</sup> / <sub>4</sub>	10 <sup>7</sup> / <sub>16</sub>	7 <sup>7</sup> / <sub>8</sub>	8 <sup>3</sup> / <sub>8</sub>	3 <sup>3</sup> / <sub>4</sub>	1 <sup>7</sup> / <sub>8</sub>	2 <sup>1</sup> / <sub>4</sub>	6 <sup>7</sup> / <sub>16</sub>	4 <sup>31</sup> / <sub>64</sub>	4 <sup>25</sup> / <sub>64</sub>	4 <sup>29</sup> / <sub>32</sub>	5/8
USRBF5000A-303	3 <sup>3</sup> / <sub>16</sub>	3 <sup>3</sup> / <sub>4</sub>	13	9 <sup>1</sup> / <sub>4</sub>	10 <sup>3</sup> / <sub>4</sub>	3 <sup>7</sup> / <sub>8</sub>	2	2 <sup>1</sup> / <sub>4</sub>	7 <sup>1</sup> / <sub>2</sub>	5 <sup>35</sup> / <sub>64</sub>	5 <sup>15</sup> / <sub>32</sub>	5 <sup>43</sup> / <sub>64</sub>	3/4
USRBF5000A-307	3 <sup>7</sup> / <sub>16</sub>	3 <sup>3</sup> / <sub>4</sub>	13	9 <sup>1</sup> / <sub>4</sub>	10 <sup>3</sup> / <sub>4</sub>	3 <sup>7</sup> / <sub>8</sub>	2	2 <sup>1</sup> / <sub>4</sub>	7 <sup>1</sup> / <sub>2</sub>	5 <sup>35</sup> / <sub>64</sub>	5 <sup>15</sup> / <sub>32</sub>	5 <sup>43</sup> / <sub>64</sub>	3/4
USRBF5000A-308	3 <sup>1</sup> / <sub>2</sub>	3 <sup>3</sup> / <sub>4</sub>	13	9 <sup>1</sup> / <sub>4</sub>	10 <sup>3</sup> / <sub>4</sub>	3 <sup>7</sup> / <sub>8</sub>	2	2 <sup>1</sup> / <sub>4</sub>	7 <sup>1</sup> / <sub>2</sub>	5 <sup>35</sup> / <sub>64</sub>	5 <sup>15</sup> / <sub>32</sub>	5 <sup>43</sup> / <sub>64</sub>	3/4
USRBF5000A-311	3 <sup>11</sup> / <sub>16</sub>	4 <sup>1</sup> / <sub>4</sub>	15 <sup>1</sup> / <sub>4</sub>	11	13	4 <sup>1</sup> / <sub>2</sub>	2 <sup>1</sup> / <sub>4</sub>	2 <sup>5</sup> / <sub>8</sub>	8 <sup>9</sup> / <sub>16</sub>	5 <sup>15</sup> / <sub>16</sub>	5 <sup>13</sup> / <sub>16</sub>	6 <sup>13</sup> / <sub>64</sub>	3/4
USRBF5000A-315	3 <sup>15</sup> / <sub>16</sub>	4 <sup>1</sup> / <sub>4</sub>	15 <sup>1</sup> / <sub>4</sub>	11	13	4 <sup>1</sup> / <sub>2</sub>	2 <sup>1</sup> / <sub>4</sub>	2 <sup>5</sup> / <sub>8</sub>	8 <sup>9</sup> / <sub>16</sub>	5 <sup>15</sup> / <sub>16</sub>	5 <sup>13</sup> / <sub>16</sub>	6 <sup>13</sup> / <sub>64</sub>	3/4
USRBF5000A-400	4	4 <sup>1</sup> / <sub>4</sub>	15 <sup>1</sup> / <sub>4</sub>	11	13	4 <sup>1</sup> / <sub>2</sub>	2 <sup>1</sup> / <sub>4</sub>	2 <sup>5</sup> / <sub>8</sub>	8 <sup>9</sup> / <sub>16</sub>	5 <sup>15</sup> / <sub>16</sub>	5 <sup>13</sup> / <sub>16</sub>	6 <sup>13</sup> / <sub>64</sub>	3/4
USRB5000A-407	4 <sup>7</sup> / <sub>16</sub>	4 <sup>3</sup> / <sub>4</sub>	16 <sup>3</sup> / <sub>64</sub>	13	14	4 <sup>5</sup> / <sub>8</sub>	2 <sup>1</sup> / <sub>2</sub>	2 <sup>3</sup> / <sub>4</sub>	9 <sup>3</sup> / <sub>8</sub>	6 <sup>27</sup> / <sub>64</sub>	6 <sup>11</sup> / <sub>32</sub>	6 <sup>31</sup> / <sub>64</sub>	3/4
USRB5000A-408	4 <sup>1</sup> / <sub>2</sub>	4 <sup>3</sup> / <sub>4</sub>	16 <sup>3</sup> / <sub>64</sub>	13	14	4 <sup>5</sup> / <sub>8</sub>	2 <sup>1</sup> / <sub>2</sub>	2 <sup>3</sup> / <sub>4</sub>	9 <sup>3</sup> / <sub>8</sub>	6 <sup>27</sup> / <sub>64</sub>	6 <sup>11</sup> / <sub>32</sub>	6 <sup>31</sup> / <sub>64</sub>	3/4
USRB5000A-415	4 <sup>15</sup> / <sub>16</sub>	5 <sup>1</sup> / <sub>2</sub>	18 <sup>1</sup> / <sub>2</sub>	15	16	5 <sup>1</sup> / <sub>8</sub>	2 <sup>3</sup> / <sub>4</sub>	3	10 <sup>7</sup> / <sub>8</sub>	7 <sup>1</sup> / <sub>8</sub>	7 <sup>13</sup> / <sub>64</sub>	7 <sup>3</sup> / <sub>32</sub>	7/8
USRB5000A-500	5	5 <sup>1</sup> / <sub>2</sub>	18 <sup>1</sup> / <sub>2</sub>	15	16	5 <sup>1</sup> / <sub>8</sub>	2 <sup>3</sup> / <sub>4</sub>	3	10 <sup>7</sup> / <sub>8</sub>	7 <sup>1</sup> / <sub>8</sub>	7 <sup>13</sup> / <sub>64</sub>	7 <sup>3</sup> / <sub>32</sub>	7/8

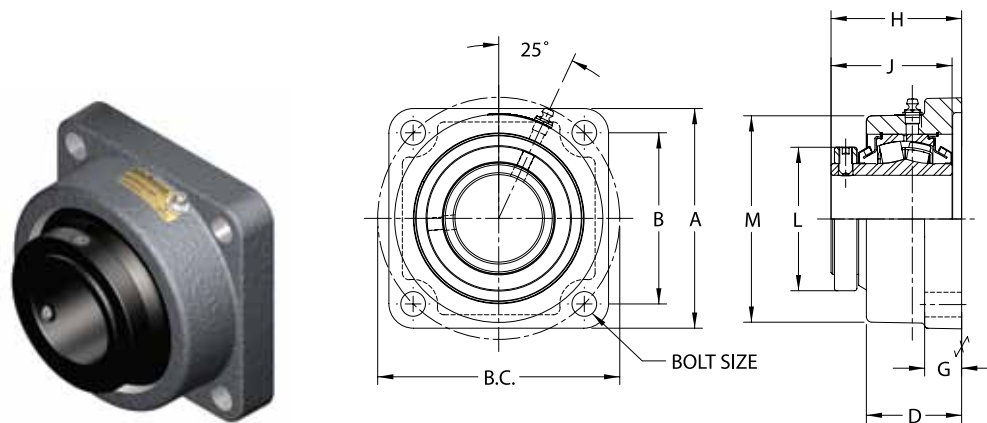
## Pillow Block USRB 5500A



### Four Bolt Base, Adapter Mount

Nomenclature	Shaft Diameter (INCHES)	A	B	C		D	E	G	H	J	L	M*	Bolt Size
				Min.	Max.								
USRB5532A-507	5 <sup>7</sup> / <sub>16</sub>	6 <sup>11</sup> / <sub>16</sub>	22	17 <sup>3</sup> / <sub>8</sub>	19 <sup>1</sup> / <sub>4</sub>	6 <sup>1</sup> / <sub>4</sub>	3 <sup>3</sup> / <sub>4</sub>	2 <sup>5</sup> / <sub>8</sub>	13 <sup>17</sup> / <sub>32</sub>	7 <sup>35</sup> / <sub>64</sub>	7 <sup>47</sup> / <sub>64</sub>	8 <sup>17</sup> / <sub>64</sub>	1
USRB5534A-515	5 <sup>15</sup> / <sub>16</sub>	7 <sup>1</sup> / <sub>16</sub>	24 <sup>3</sup> / <sub>4</sub>	19 <sup>3</sup> / <sub>8</sub>	21 <sup>5</sup> / <sub>8</sub>	6 <sup>3</sup> / <sub>4</sub>	4 <sup>1</sup> / <sub>4</sub>	2 <sup>3</sup> / <sub>4</sub>	14 <sup>31</sup> / <sub>32</sub>	8 <sup>17</sup> / <sub>32</sub>	8 <sup>1</sup> / <sub>2</sub>	9 <sup>7</sup> / <sub>64</sub>	1
USRB5536A-607	6 <sup>7</sup> / <sub>16</sub>	7 <sup>1</sup> / <sub>2</sub>	26 <sup>3</sup> / <sub>4</sub>	20 <sup>7</sup> / <sub>8</sub>	23 <sup>5</sup> / <sub>8</sub>	7 <sup>1</sup> / <sub>8</sub>	4 <sup>5</sup> / <sub>8</sub>	3	15 <sup>61</sup> / <sub>64</sub>	9 <sup>3</sup> / <sub>8</sub>	9 <sup>11</sup> / <sub>16</sub>	9 <sup>13</sup> / <sub>16</sub>	1
USRB5536A-608	6 <sup>1</sup> / <sub>2</sub>	7 <sup>1</sup> / <sub>2</sub>	26 <sup>3</sup> / <sub>4</sub>	20 <sup>7</sup> / <sub>8</sub>	23 <sup>5</sup> / <sub>8</sub>	7 <sup>1</sup> / <sub>8</sub>	4 <sup>5</sup> / <sub>8</sub>	3	15 <sup>61</sup> / <sub>64</sub>	9 <sup>3</sup> / <sub>8</sub>	9 <sup>11</sup> / <sub>16</sub>	9 <sup>13</sup> / <sub>16</sub>	1
USRB5538A-615	6 <sup>15</sup> / <sub>16</sub>	7 <sup>7</sup> / <sub>8</sub>	28	21 <sup>5</sup> / <sub>8</sub>	24 <sup>3</sup> / <sub>8</sub>	7 <sup>1</sup> / <sub>2</sub>	4 <sup>1</sup> / <sub>2</sub>	3 <sup>1</sup> / <sub>8</sub>	16 <sup>9</sup> / <sub>16</sub>	9 <sup>3</sup> / <sub>8</sub>	9 <sup>11</sup> / <sub>16</sub>	10	1 <sup>1</sup> / <sub>4</sub>
USRB5538A-700	7	7 <sup>7</sup> / <sub>8</sub>	28										

**Flange Block**  
USFB 5000

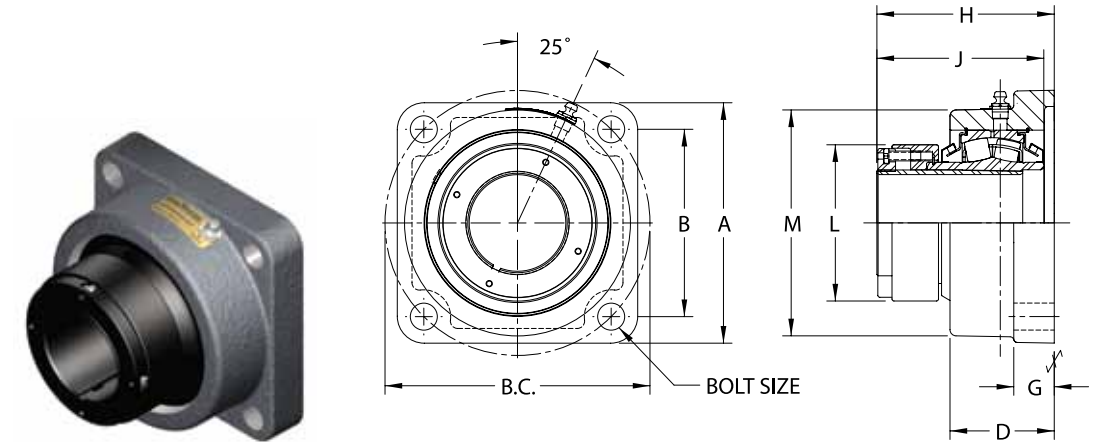


**Four Bolt Base, Collar Mount**

Nomenclature	Shaft Diameter (INCHES)	A	B	B.C.	D	G	H*	J	L	M	Bolt Size
USFB5000-106	1 3/8										
USFB5000-107	1 7/16	4 5/8	3 17/32	5	2 1/16	3/4	2 25/32	2 3/4	2 49/64	3 7/8	1/2
USFB5000-108	1 1/2										
USFB5000-111	1 11/16	5	3 57/64	5 1/2	2 1/4	3/4	2 29/32	2 7/8	2 3/4	4 1/2	1/2
USFB5000-112	1 3/4										
USFB5000-115	1 15/16	5 3/16	4 1/16	5 3/4	2 1/4	3/4	2 29/32	2 7/8	3	4 3/4	1/2
USFB5000-200	2										
USFB5000-203	2 3/16	5 7/8	4 1/2	6 3/8	2 7/16	13/16	3 5/32	3 1/8	3 1/4	5 1/8	5/8
USFB5000-207	2 7/16	6 1/8	4 49/64	6 3/4	2 21/32	1 1/32	3 13/32	3 3/8	4	5 3/4	5/8
USFB5000-208	2 1/2										
USFB5000-211	2 11/16										
USFB5000-212	2 3/4	7 3/16	5 9/16	7 7/8	2 7/8	15/16	3 57/64	3 7/8	4 17/32	6 5/8	3/4
USFB5000-215	2 15/16										
USFB5000-300	3										
USFB5000-303	3 3/16										
USFB5000-307	3 7/16	8 3/8	6 23/32	9 1/2	3 7/32	1 1/8	4 1/2	4 15/32	5 5/16	7 5/8	3/4
USFB5000-308	3 1/2										
USFB5000-311	3 11/16										
USFB5000-315	3 15/16	9 1/2	7 19/32	10 3/4	3 1/2	1 1/8	4 31/32	4 15/16	6	8 3/8	7/8
USFB5000-400	4										

\* For expansion bearings, this dimension can increase by the corresponding value listed in Table 7 on page 28.

**Flange Block**  
USFB 5000A

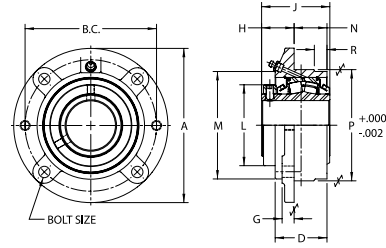


**Four Bolt Base, Adapter Mount**

Nomenclature	Bore (INCHES)	A	B	B.C.	D	G	H*	J	L	M	Bolt Size
USFB5000A-106	1 3/8										
USFB5000A-107	1 7/16	4 5/8	3 17/32	5	2 1/16	3/4	3 3/8	3 23/64	2 47/64	3 7/8	1/2
USFB5000A-108	1 1/2										
USFB5000A-111	1 11/16	5	3 57/64	5 1/2	2 1/4	3/4	3 31/64	3 29/64	2 63/64	4 1/2	1/2
USFB5000A-112	1 3/4										
USFB5000A-115	1 15/16	5 3/16	4 1/16	5 3/4	2 1/4	3/4	3 17/32	3 1/2	3 3/16	4 3/4	1/2
USFB5000A-200	2										
USFB5000A-203	2 3/16	5 7/8	4 1/2	6 3/8	2 7/16	13/16	3 29/32	3 57/64	3 29/64	5 1/8	5/8
USFB5000A-207	2 7/16	6 1/8	4 49/64	6 3/4	2 21/32	1 1/32	4 21/64	4 5/16	3 63/64	5 3/4	5/8
USFB5000A-208	2 1/2										
USFB5000A-211	2 11/16										
USFB5000A-212	2 3/4	7 3/16	5 9/16	7 7/8	2 7/8	15/16	4 33/64	4 31/64	4 25/64	6 5/8	3/4
USFB5000A-215	2 15/16										
USFB5000A-300	3										
USFB5000A-303	3 3/16										
USFB5000A-307	3 7/16	8 3/8	6 23/32	9 1/2	3 7/32	1 1/8	5 19/32	5 25/64	5 15/32	7 5/8	3/4
USFB5000A-308	3 1/2										
USFB5000A-311	3 11/16										
USFB5000A-315	3 15/16	9 1/2	7 19/32	10 3/4	3 1/2	1 1/8	5 63/64	5 15/16	5 13/16	8 3/8	7/8
USFB5000A-400	4										

\* For expansion bearings, this dimension can increase by the corresponding value listed in Table 7 on page 28.

## Flange Cartridge USFC 5000

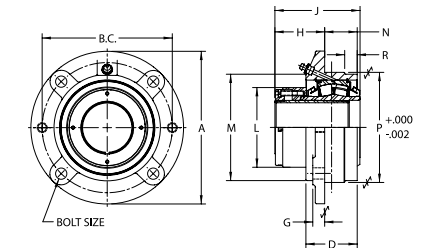


### Collar Mount

Nomenclature	Shaft Diameter (INCHES)	A	B.C.	D	G	H*	J	L	M	N	P	R	Bolt Size
USFC5000-106	1 3/8	5 1/4	4 3/8	2 1/16	15/32	1 7/16	2 3/4	2 49/64	3 1/2	1 9/32	3 5/8	-	3/8
USFC5000-107	1 7/16	5 1/4	4 3/8	2 1/16	15/32	1 7/16	2 3/4	2 49/64	3 1/2	1 9/32	3 5/8	-	3/8
USFC5000-108	1 1/2	5 1/4	4 3/8	2 1/16	15/32	1 7/16	2 3/4	2 49/64	3 1/2	1 9/32	3 5/8	-	3/8
USFC5000-111	1 11/16	6 1/8	5 1/8	2 1/4	17/32	1 27/64	2 7/8	2 3/4	4	1 7/16	4 1/4	9/16	7/16
USFC5000-112	1 3/4	6 1/8	5 1/8	2 1/4	17/32	1 27/64	2 7/8	2 3/4	4	1 7/16	4 1/4	9/16	7/16
USFC5000-115	1 15/16	6 3/8	5 3/8	2 1/4	17/32	1 25/64	2 7/8	3	4 3/8	1 15/32	4 1/2	19/32	7/16
USFC5000-200	2	6 3/8	5 3/8	2 1/4	17/32	1 25/64	2 7/8	3	4 3/8	1 15/32	4 1/2	19/32	7/16
USFC5000-203	2 3/16	7 1/8	6	2 3/8	17/32	1 37/64	3 1/8	3 1/4	4 3/4	1 15/32	5	15/32	1/2
USFC5000-207	2 7/16	7 5/8	6 1/2	2 9/16	19/32	1 19/32	3 3/8	4	5 5/16	1 5/8	5 1/2	5/8	1/2
USFC5000-208	2 1/2	7 5/8	6 1/2	2 9/16	19/32	1 19/32	3 3/8	4	5 5/16	1 5/8	5 1/2	5/8	1/2
USFC5000-211	2 11/16	8 3/4	7 1/2	2 7/8	23/32	1 63/64	3 7/8	4 17/32	6	1 27/32	6 3/8	19/32	5/8
USFC5000-212	2 3/4	8 3/4	7 1/2	2 7/8	23/32	1 63/64	3 7/8	4 17/32	6	1 27/32	6 3/8	19/32	5/8
USFC5000-215	2 15/16	8 3/4	7 1/2	2 7/8	23/32	1 63/64	3 7/8	4 17/32	6	1 27/32	6 3/8	19/32	5/8
USFC5000-300	3	8 3/4	7 1/2	2 7/8	23/32	1 63/64	3 7/8	4 17/32	6	1 27/32	6 3/8	19/32	5/8
USFC5000-303	3 3/16	10 1/4	8 5/8	3 7/64	53/64	2 13/32	4 15/32	5 5/16	7 3/16	1 27/32	7 3/8	19/32	3/4
USFC5000-307	3 7/16	10 1/4	8 5/8	3 7/64	53/64	2 13/32	4 15/32	5 5/16	7 3/16	1 27/32	7 3/8	19/32	3/4
USFC5000-308	3 1/2	10 1/4	8 5/8	3 7/64	53/64	2 13/32	4 15/32	5 5/16	7 3/16	1 27/32	7 3/8	19/32	3/4
USFC5000-311	3 11/16	10 7/8	9 3/8	3 1/2	31/32	2 21/32	4 15/16	6	7 3/4	2 1/16	8 1/8	9/16	3/4
USFC5000-315	3 15/16	10 7/8	9 3/8	3 1/2	31/32	2 21/32	4 15/16	6	7 3/4	2 1/16	8 1/8	9/16	3/4
USFC5000-400	4	10 7/8	9 3/8	3 1/2	31/32	2 21/32	4 15/16	6	7 3/4	2 1/16	8 1/8	9/16	3/4

\* For expansion bearings, this dimension can increase by the corresponding value listed in Table 7 on page 28.

## Flange Cartridge USFC 5000A

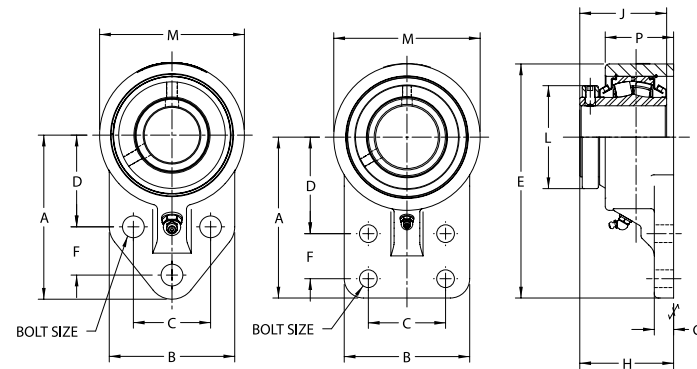


### Adapter Mount

Nomenclature	Shaft Diameter (INCHES)	A	B.C.	D	G	H*	J	L	M	N	P	R	Bolt Size
USFC5000A-106	1 3/8	5 1/4	4 3/8	2 1/16	15/32	2 3/64	3 23/64	2 47/64	3 1/2	1 9/32	3 5/8	-	3/8
USFC5000A-107	1 7/16	5 1/4	4 3/8	2 1/16	15/32	2 3/64	3 23/64	2 47/64	3 1/2	1 9/32	3 5/8	-	3/8
USFC5000A-108	1 1/2	5 1/4	4 3/8	2 1/16	15/32	2 3/64	3 23/64	2 47/64	3 1/2	1 9/32	3 5/8	-	3/8
USFC5000A-111	1 11/16	6 1/8	5 1/8	2 1/4	15/32	2	3 29/64	2 63/64	4	1 7/16	4 1/4	9/16	7/16
USFC5000A-112	1 3/4	6 1/8	5 1/8	2 1/4	15/32	2	3 29/64	2 63/64	4	1 7/16	4 1/4	9/16	7/16
USFC5000A-115	1 15/16	6 3/8	5 3/8	2 1/4	17/32	2 1/64	3 1/2	3 3/16	4 3/8	1 15/32	4 1/2	19/32	7/16
USFC5000A-200	2	6 3/8	5 3/8	2 1/4	17/32	2 1/64	3 1/2	3 3/16	4 3/8	1 15/32	4 1/2	19/32	7/16
USFC5000A-203	2 3/16	7 1/8	6	2 3/8	17/32	2 11/32	3 57/64	3 29/64	4 3/4	1 15/32	5	15/32	1/2
USFC5000A-207	2 7/16	7 5/8	6 1/2	2 9/16	19/32	2 17/32	4 5/16	3 63/64	5 5/16	1 5/8	5 1/2	5/8	1/2
USFC5000A-208	2 1/2	7 5/8	6 1/2	2 9/16	19/32	2 17/32	4 5/16	3 63/64	5 5/16	1 5/8	5 1/2	5/8	1/2
USFC5000A-211	2 11/16	8 3/4	7 1/2	2 7/8	23/32	2 19/32	4 31/64	4 25/64	6	1 27/32	6 3/8	19/32	5/8
USFC5000A-212	2 3/4	8 3/4	7 1/2	2 7/8	23/32	2 19/32	4 31/64	4 25/64	6	1 27/32	6 3/8	19/32	5/8
USFC5000A-215	2 15/16	8 3/4	7 1/2	2 7/8	23/32	2 19/32	4 31/64	4 25/64	6	1 27/32	6 3/8	19/32	5/8
USFC5000A-300	3	8 3/4	7 1/2	2 7/8	23/32	2 19/32	4 31/64	4 25/64	6	1 27/32	6 3/8	19/32	5/8
USFC5000A-303	3 3/16	10 1/4	8 5/8	3 7/64	53/64	3 1/2	5 35/64	5 15/32	7 3/16	1 27/32	7 3/8	19/32	3/4
USFC5000A-307	3 7/16	10 1/4	8 5/8	3 7/64	53/64	3 1/2	5 35/64	5 15/32	7 3/16	1 27/32	7 3/8	19/32	3/4
USFC5000A-308	3 1/2	10 1/4	8 5/8	3 7/64	53/64	3 1/2	5 35/64	5 15/32	7 3/16	1 27/32	7 3/8	19/32	3/4
USFC5000A-311	3 11/16	10 7/8	9 3/8	3 1/2	31/32	3 21/32	5 15/16	5 13/16	7 3/4	2 1/16	8 1/8	9/16	3/4
USFC5000A-315	3 15/16	10 7/8	9 3/8	3 1/2	31/32	3 21/32	5 15/16	5 13/16	7 3/4	2 1/16	8 1/8	9/16	3/4
USFC5000A-400	4	10 7/8	9 3/8	3 1/2	31/32	3 21/32	5 15/16	5 13/16	7 3/4	2 1/16	8 1/8	9/16	3/4

\* For expansion bearings, this dimension can increase by the corresponding value listed in Table 7 on page 28.

## Flange Bracket USBF 5000



### Three Bolt, Collar Mount

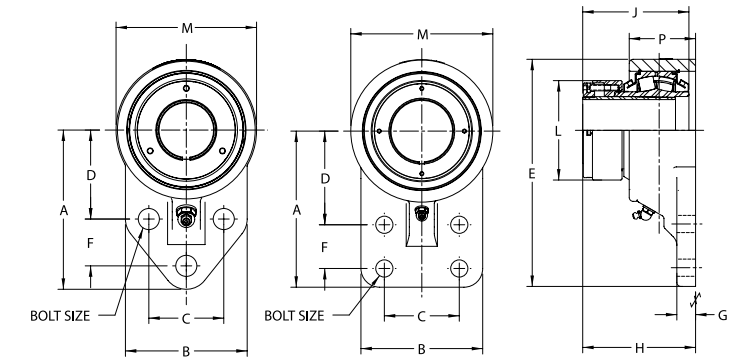
Nomenclature	Bore (INCHES)	A	B	C	D	E	F	G	H*	J	L	M	P	Bolt Size
USBF5000-107	1 7/16	4 1/4	3 1/4	2	2 3/8	6 1/8	1 1/4	5/8	2 25/32	2 3/4	2 49/64	3 3/4	2 1/4	1/2
USBF5000-115	1 15/16	5 3/16	4	2 3/4	2 15/16	7 5/16	1 5/8	9/16	2 29/32	2 7/8	3	4 1/4	2 1/4	1/2

### Four Bolt, Collar Mount

USBF5000-207	2 7/16	6 1/4	4 7/8	3	3 3/4	9 3/32	1 3/4	3/4	3 13/32	3 3/8	4	5 11/16	2 21/32	5/8
--------------	--------	-------	-------	---	-------	--------	-------	-----	---------	-------	---	---------	---------	-----

\* For expansion bearings, this dimension can increase by the corresponding value listed in Table 7 on page 28.

## Flange Bracket USBF 5000A



### Three Bolt, Adapter Mount

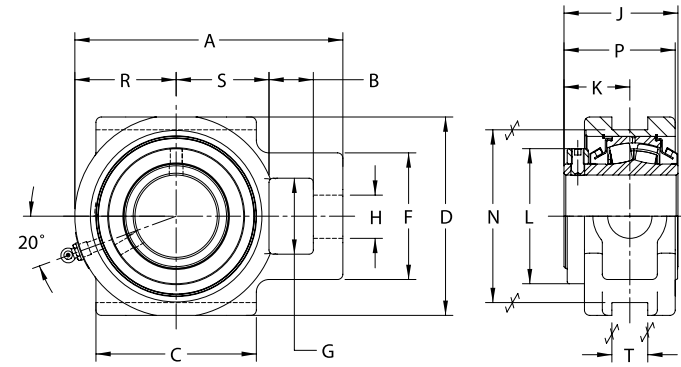
Nomenclature	Bore (INCHES)	A	B	C	D	E	F	G	H*	J	L	M	P	Bolt Size
USBF5000A-107	1 7/16	4 1/4	3 1/4	2	2 3/8	6 1/8	1 1/4	5/8	3 3/8	3 23/64	2 47/64	3 3/4	2 1/4	1/2
USBF5000A-115	1 15/16	5 3/16	4	2 3/4	2 15/16	7 5/16	1 5/8	9/16	3 17/32	3 1/2	3 3/16	4 1/4	2 1/4	1/2

### Four Bolt, Collar Mount

USBF5000A-207	2 7/16	6 1/4	4 7/8	3	3 3/4	9 3/32	1 3/4	3/4	4 21/64	4 5/16	3 63/64	5 11/16	2 21/32	5/8
---------------	--------	-------	-------	---	-------	--------	-------	-----	---------	--------	---------	---------	---------	-----

\* For expansion bearings, this dimension can increase by the corresponding value listed in Table 7 on page 28.

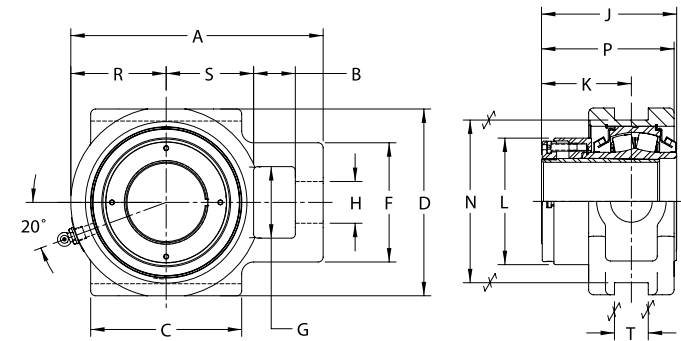
**Take-Up**  
USTU 5000



**Collar Mount**

Nomenclature	Shaft Diameter (INCHES)	A	B	C	D	F	G	H	J	K	L	N	P	R	S	T
USTU5000-115	1 <sup>15</sup> / <sub>16</sub>	6 <sup>3</sup> / <sub>16</sub>	1 <sup>1</sup> / <sub>16</sub>	3 <sup>1</sup> / <sub>2</sub>	4 <sup>3</sup> / <sub>4</sub>	2 <sup>7</sup> / <sub>8</sub>	1 <sup>15</sup> / <sub>16</sub>	1 <sup>1</sup> / <sub>16</sub>	2 <sup>7</sup> / <sub>8</sub>	1 <sup>11</sup> / <sub>16</sub>	3	4	2 <sup>29</sup> / <sub>32</sub>	2 <sup>1</sup> / <sub>4</sub>	2 <sup>1</sup> / <sub>8</sub>	1 <sup>11</sup> / <sub>16</sub>
USTU5000-200	2	6 <sup>3</sup> / <sub>16</sub>	1 <sup>1</sup> / <sub>16</sub>	3 <sup>1</sup> / <sub>2</sub>	5 <sup>1</sup> / <sub>4</sub>	3 <sup>1</sup> / <sub>2</sub>	2 <sup>1</sup> / <sub>4</sub>	1 <sup>3</sup> / <sub>16</sub>	3 <sup>1</sup> / <sub>8</sub>	1 <sup>55</sup> / <sub>64</sub>	3 <sup>1</sup> / <sub>4</sub>	4 <sup>1</sup> / <sub>2</sub>	3 <sup>9</sup> / <sub>64</sub>	2 <sup>1</sup> / <sub>2</sub>	2 <sup>3</sup> / <sub>8</sub>	1 <sup>13</sup> / <sub>16</sub>
USTU5000-203	2 <sup>3</sup> / <sub>16</sub>	6 <sup>13</sup> / <sub>16</sub>	1 <sup>3</sup> / <sub>16</sub>	3 <sup>3</sup> / <sub>4</sub>	5 <sup>7</sup> / <sub>8</sub>	3 <sup>3</sup> / <sub>4</sub>	2 <sup>1</sup> / <sub>4</sub>	1 <sup>5</sup> / <sub>16</sub>	3 <sup>3</sup> / <sub>8</sub>	1 <sup>15</sup> / <sub>16</sub>	4	5 <sup>1</sup> / <sub>8</sub>	3 <sup>9</sup> / <sub>32</sub>	3	2 <sup>3</sup> / <sub>4</sub>	1 <sup>1</sup> / <sub>16</sub>
USTU5000-207	2 <sup>7</sup> / <sub>16</sub>	7 <sup>15</sup> / <sub>16</sub>	1 <sup>5</sup> / <sub>16</sub>	4 <sup>3</sup> / <sub>4</sub>	5 <sup>7</sup> / <sub>8</sub>	3 <sup>3</sup> / <sub>4</sub>	2 <sup>1</sup> / <sub>4</sub>	1 <sup>5</sup> / <sub>16</sub>	3 <sup>3</sup> / <sub>8</sub>	1 <sup>15</sup> / <sub>16</sub>	4	5 <sup>1</sup> / <sub>8</sub>	3 <sup>9</sup> / <sub>32</sub>	3	2 <sup>3</sup> / <sub>4</sub>	1 <sup>1</sup> / <sub>16</sub>
USTU5000-208	2 <sup>1</sup> / <sub>2</sub>	7 <sup>15</sup> / <sub>16</sub>	1 <sup>5</sup> / <sub>16</sub>	4 <sup>3</sup> / <sub>4</sub>	5 <sup>7</sup> / <sub>8</sub>	3 <sup>3</sup> / <sub>4</sub>	2 <sup>1</sup> / <sub>4</sub>	1 <sup>5</sup> / <sub>16</sub>	3 <sup>3</sup> / <sub>8</sub>	1 <sup>15</sup> / <sub>16</sub>	4	5 <sup>1</sup> / <sub>8</sub>	3 <sup>9</sup> / <sub>32</sub>	3	2 <sup>3</sup> / <sub>4</sub>	1 <sup>1</sup> / <sub>16</sub>
USTU5000-211	2 <sup>11</sup> / <sub>16</sub>	8 <sup>3</sup> / <sub>4</sub>	1 <sup>9</sup> / <sub>16</sub>	4 <sup>3</sup> / <sub>4</sub>	6 <sup>3</sup> / <sub>4</sub>	4 <sup>1</sup> / <sub>4</sub>	2 <sup>3</sup> / <sub>4</sub>	1 <sup>9</sup> / <sub>16</sub>	3 <sup>7</sup> / <sub>8</sub>	2 <sup>11</sup> / <sub>32</sub>	4 <sup>17</sup> / <sub>32</sub>	5 <sup>15</sup> / <sub>16</sub>	3 <sup>27</sup> / <sub>32</sub>	3 <sup>3</sup> / <sub>16</sub>	3	1 <sup>13</sup> / <sub>16</sub>
USTU5000-212	2 <sup>3</sup> / <sub>4</sub>	8 <sup>3</sup> / <sub>4</sub>	1 <sup>9</sup> / <sub>16</sub>	4 <sup>3</sup> / <sub>4</sub>	6 <sup>3</sup> / <sub>4</sub>	4 <sup>1</sup> / <sub>4</sub>	2 <sup>3</sup> / <sub>4</sub>	1 <sup>9</sup> / <sub>16</sub>	3 <sup>7</sup> / <sub>8</sub>	2 <sup>11</sup> / <sub>32</sub>	4 <sup>17</sup> / <sub>32</sub>	5 <sup>15</sup> / <sub>16</sub>	3 <sup>27</sup> / <sub>32</sub>	3 <sup>3</sup> / <sub>16</sub>	3	1 <sup>13</sup> / <sub>16</sub>
USTU5000-215	2 <sup>15</sup> / <sub>16</sub>	8 <sup>3</sup> / <sub>4</sub>	1 <sup>9</sup> / <sub>16</sub>	4 <sup>3</sup> / <sub>4</sub>	6 <sup>3</sup> / <sub>4</sub>	4 <sup>1</sup> / <sub>4</sub>	2 <sup>3</sup> / <sub>4</sub>	1 <sup>9</sup> / <sub>16</sub>	3 <sup>7</sup> / <sub>8</sub>	2 <sup>11</sup> / <sub>32</sub>	4 <sup>17</sup> / <sub>32</sub>	5 <sup>15</sup> / <sub>16</sub>	3 <sup>27</sup> / <sub>32</sub>	3 <sup>3</sup> / <sub>16</sub>	3	1 <sup>13</sup> / <sub>16</sub>
USTU5000-300	3	10 <sup>7</sup> / <sub>16</sub>	1 <sup>13</sup> / <sub>16</sub>	6 <sup>1</sup> / <sub>4</sub>	7 <sup>5</sup> / <sub>8</sub>	4 <sup>7</sup> / <sub>8</sub>	2 <sup>7</sup> / <sub>8</sub>	1 <sup>13</sup> / <sub>16</sub>	4 <sup>15</sup> / <sub>32</sub>	2 <sup>41</sup> / <sub>64</sub>	5 <sup>5</sup> / <sub>16</sub>	6 <sup>13</sup> / <sub>16</sub>	4 <sup>29</sup> / <sub>64</sub>	4	3 <sup>5</sup> / <sub>8</sub>	1 <sup>13</sup> / <sub>16</sub>
USTU5000-303	3 <sup>3</sup> / <sub>16</sub>	10 <sup>7</sup> / <sub>16</sub>	1 <sup>13</sup> / <sub>16</sub>	6 <sup>1</sup> / <sub>4</sub>	7 <sup>5</sup> / <sub>8</sub>	4 <sup>7</sup> / <sub>8</sub>	2 <sup>7</sup> / <sub>8</sub>	1 <sup>13</sup> / <sub>16</sub>	4 <sup>15</sup> / <sub>32</sub>	2 <sup>41</sup> / <sub>64</sub>	5 <sup>5</sup> / <sub>16</sub>	6 <sup>13</sup> / <sub>16</sub>	4 <sup>29</sup> / <sub>64</sub>	4	3 <sup>5</sup> / <sub>8</sub>	1 <sup>13</sup> / <sub>16</sub>
USTU5000-307	3 <sup>7</sup> / <sub>16</sub>	10 <sup>7</sup> / <sub>16</sub>	1 <sup>13</sup> / <sub>16</sub>	6 <sup>1</sup> / <sub>4</sub>	7 <sup>5</sup> / <sub>8</sub>	4 <sup>7</sup> / <sub>8</sub>	2 <sup>7</sup> / <sub>8</sub>	1 <sup>13</sup> / <sub>16</sub>	4 <sup>15</sup> / <sub>32</sub>	2 <sup>41</sup> / <sub>64</sub>	5 <sup>5</sup> / <sub>16</sub>	6 <sup>13</sup> / <sub>16</sub>	4 <sup>29</sup> / <sub>64</sub>	4	3 <sup>5</sup> / <sub>8</sub>	1 <sup>13</sup> / <sub>16</sub>
USTU5000-308	3 <sup>1</sup> / <sub>2</sub>	11 <sup>13</sup> / <sub>16</sub>	2 <sup>1</sup> / <sub>8</sub>	7	9 <sup>7</sup> / <sub>16</sub>	5 <sup>5</sup> / <sub>8</sub>	3 <sup>3</sup> / <sub>8</sub>	2 <sup>3</sup> / <sub>16</sub>	4 <sup>15</sup> / <sub>16</sub>	2 <sup>59</sup> / <sub>64</sub>	6	8 <sup>5</sup> / <sub>8</sub>	5 <sup>11</sup> / <sub>64</sub>	4 <sup>7</sup> / <sub>16</sub>	4 <sup>1</sup> / <sub>8</sub>	2 <sup>1</sup> / <sub>16</sub>
USTU5000-311	3 <sup>11</sup> / <sub>16</sub>	11 <sup>13</sup> / <sub>16</sub>	2 <sup>1</sup> / <sub>8</sub>	7	9 <sup>7</sup> / <sub>16</sub>	5 <sup>5</sup> / <sub>8</sub>	3 <sup>3</sup> / <sub>8</sub>	2 <sup>3</sup> / <sub>16</sub>	4 <sup>15</sup> / <sub>16</sub>	2 <sup>59</sup> / <sub>64</sub>	6	8 <sup>5</sup> / <sub>8</sub>	5 <sup>11</sup> / <sub>64</sub>	4 <sup>7</sup> / <sub>16</sub>	4 <sup>1</sup> / <sub>8</sub>	2 <sup>1</sup> / <sub>16</sub>
USTU5000-315	3 <sup>15</sup> / <sub>16</sub>	11 <sup>13</sup> / <sub>16</sub>	2 <sup>1</sup> / <sub>8</sub>	7	9 <sup>7</sup> / <sub>16</sub>	5 <sup>5</sup> / <sub>8</sub>	3 <sup>3</sup> / <sub>8</sub>	2 <sup>3</sup> / <sub>16</sub>	4 <sup>15</sup> / <sub>16</sub>	2 <sup>59</sup> / <sub>64</sub>	6	8 <sup>5</sup> / <sub>8</sub>	5 <sup>11</sup> / <sub>64</sub>	4 <sup>7</sup> / <sub>16</sub>	4 <sup>1</sup> / <sub>8</sub>	2 <sup>1</sup> / <sub>16</sub>
USTU5000-400	4	11 <sup>13</sup> / <sub>16</sub>	2 <sup>1</sup> / <sub>8</sub>	7	9 <sup>7</sup> / <sub>16</sub>	5 <sup>5</sup> / <sub>8</sub>	3 <sup>3</sup> / <sub>8</sub>	2 <sup>3</sup> / <sub>16</sub>	4 <sup>15</sup> / <sub>16</sub>	2 <sup>59</sup> / <sub>64</sub>	6	8 <sup>5</sup> / <sub>8</sub>	5 <sup>11</sup> / <sub>64</sub>	4 <sup>7</sup> / <sub>16</sub>	4 <sup>1</sup> / <sub>8</sub>	2 <sup>1</sup> / <sub>16</sub>

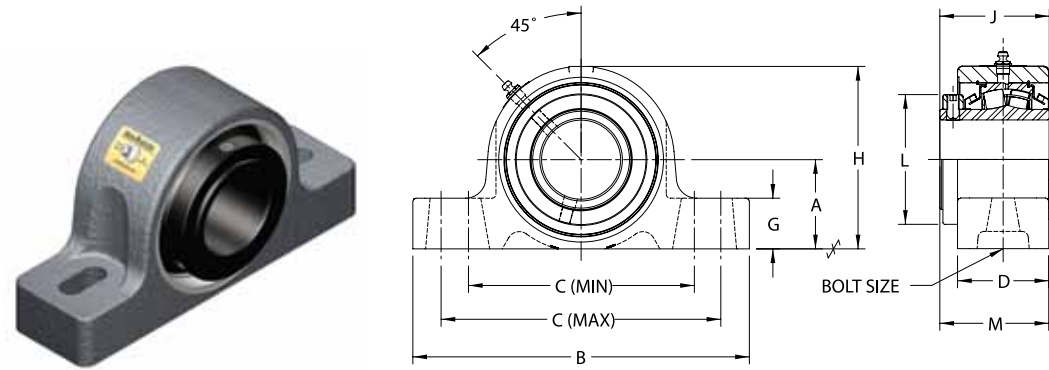
**Take-Up**  
USTU 5000A



**Adapter Mount**

Nomenclature	Shaft Diameter (INCHES)	A	B	C	D	F	G	H	J	K	L	N	P	R	S	T
USTU5000A-115	1 <sup>15</sup> / <sub>16</sub>	6 <sup>3</sup> / <sub>16</sub>	1 <sup>1</sup> / <sub>16</sub>	3 <sup>1</sup> / <sub>2</sub>	4 <sup>3</sup> / <sub>4</sub>	2 <sup>7</sup> / <sub>8</sub>	1 <sup>15</sup> / <sub>16</sub>	1 <sup>1</sup> / <sub>16</sub>	3 <sup>1</sup> / <sub>2</sub>	2 <sup>5</sup> / <sub>16</sub>	3 <sup>3</sup> / <sub>16</sub>	4	3 <sup>17</sup> / <sub>32</sub>	2 <sup>1</sup> / <sub>4</sub>	2 <sup>1</sup> / <sub>8</sub>	1 <sup>11</sup> / <sub>16</sub>
USTU5000A-200	2	6 <sup>3</sup> / <sub>16</sub>	1 <sup>1</sup> / <sub>16</sub>	3 <sup>1</sup> / <sub>2</sub>	5 <sup>1</sup> / <sub>4</sub>	3 <sup>1</sup> / <sub>2</sub>	2 <sup>1</sup> / <sub>4</sub>	1 <sup>3</sup> / <sub>16</sub>	3 <sup>57</sup> / <sub>64</sub>	2 <sup>5</sup> / <sub>8</sub>	3 <sup>29</sup> / <sub>64</sub>	4 <sup>1</sup> / <sub>2</sub>	3 <sup>29</sup> / <sub>32</sub>	2 <sup>1</sup> / <sub>2</sub>	2 <sup>3</sup> / <sub>8</sub>	1 <sup>13</sup> / <sub>16</sub>
USTU5000A-203	2 <sup>3</sup> / <sub>16</sub>	6 <sup>13</sup> / <sub>16</sub>	1 <sup>3</sup> / <sub>16</sub>	3 <sup>3</sup> / <sub>4</sub>	5 <sup>7</sup> / <sub>8</sub>	3 <sup>3</sup> / <sub>4</sub>	2 <sup>1</sup> / <sub>4</sub>	1 <sup>5</sup> / <sub>16</sub>	4 <sup>5</sup> / <sub>16</sub>	2 <sup>7</sup> / <sub>8</sub>	3 <sup>63</sup> / <sub>64</sub>	5 <sup>1</sup> / <sub>8</sub>	4 <sup>7</sup> / <sub>32</sub>	3	2 <sup>3</sup> / <sub>4</sub>	1 <sup>1</sup> / <sub>16</sub>
USTU5000A-207	2 <sup>7</sup> / <sub>16</sub>	7 <sup>15</sup> / <sub>16</sub>	1 <sup>5</sup> / <sub>16</sub>	4 <sup>3</sup> / <sub>4</sub>	5 <sup>7</sup> / <sub>8</sub>	3 <sup>3</sup> / <sub>4</sub>	2 <sup>1</sup> / <sub>4</sub>	1 <sup>5</sup> / <sub>16</sub>	4 <sup>5</sup> / <sub>16</sub>	2 <sup>7</sup> / <sub>8</sub>	3 <sup>63</sup> / <sub>64</sub>	5 <sup>1</sup> / <sub>8</sub>	4 <sup>7</sup> / <sub>32</sub>	3	2 <sup>3</sup> / <sub>4</sub>	1 <sup>1</sup> / <sub>16</sub>
USTU5000A-208	2 <sup>1</sup> / <sub>2</sub>	7 <sup>15</sup> / <sub>16</sub>	1 <sup>5</sup> / <sub>16</sub>	4 <sup>3</sup> / <sub>4</sub>	5 <sup>7</sup> / <sub>8</sub>	3 <sup>3</sup> / <sub>4</sub>	2 <sup>1</sup> / <sub>4</sub>	1 <sup>5</sup> / <sub>16</sub>	4 <sup>5</sup> / <sub>16</sub>	2 <sup>7</sup> / <sub>8</sub>	3 <sup>63</sup> / <sub>64</sub>	5 <sup>1</sup> / <sub>8</sub>	4 <sup>7</sup> / <sub>32</sub>	3	2 <sup>3</sup> / <sub>4</sub>	1 <sup>1</sup> / <sub>16</sub>
USTU5000A-211	2 <sup>11</sup> / <sub>16</sub>	8 <sup>3</sup> / <sub>4</sub>	1 <sup>9</sup> / <sub>16</sub>	4 <sup>3</sup> / <sub>4</sub>	6 <sup>3</sup> / <sub>4</sub>	4 <sup>1</sup> / <sub>4</sub>	2 <sup>3</sup> / <sub>4</sub>	1 <sup>9</sup> / <sub>16</sub>	4 <sup>31</sup> / <sub>64</sub>	2 <sup>61</sup> / <sub>64</sub>	4 <sup>25</sup> / <sub>64</sub>	5 <sup>15</sup> / <sub>16</sub>	4 <sup>29</sup> / <sub>64</sub>	3 <sup>3</sup> / <sub>16</sub>	3	1 <sup>13</sup> / <sub>16</sub>
USTU5000A-212	2 <sup>3</sup> / <sub>4</sub>	8 <sup>3</sup> / <sub>4</sub>	1 <sup>9</sup> / <sub>16</sub>	4 <sup>3</sup> / <sub>4</sub>	6 <sup>3</sup> / <sub>4</sub>	4 <sup>1</sup> / <sub>4</sub>	2 <sup>3</sup> / <sub>4</sub>	1 <sup>9</sup> / <sub>16</sub>	4 <sup>31</sup> / <sub>64</sub>	2 <sup>61</sup> / <sub>64</sub>	4 <sup>25</sup> / <sub>64</sub>	5 <sup>15</sup> / <sub>16</sub>	4 <sup>29</sup> / <sub>64</sub>	3 <sup>3</sup> / <sub>16</sub>	3	1 <sup>13</sup> / <sub>16</sub>
USTU5000A-215	2 <sup>15</sup> / <sub>16</sub>	8 <sup>3</sup> / <sub>4</sub>	1 <sup>9</sup> / <sub>16</sub>	4 <sup>3</sup> / <sub>4</sub>	6 <sup>3</sup> / <sub>4</sub>	4 <sup>1</sup> / <sub>4</sub>	2 <sup>3</sup> / <sub>4</sub>	1 <sup>9</sup> / <sub>16</sub>	4 <sup>31</sup> / <sub>64</sub>	2 <sup>61</sup> / <sub>64</sub>	4 <sup>25</sup> / <sub>64</sub>	5 <sup>15</sup> / <sub>16</sub>	4 <sup>29</sup> / <sub>64</sub>	3 <sup>3</sup> / <sub>16</sub>	3	1 <sup>13</sup> / <sub>16</sub>
USTU5000A-300	3	10 <sup>7</sup> / <sub>16</sub>	1 <sup>13</sup> / <sub>16</sub>	6 <sup>1</sup> / <sub>4</sub>	7 <sup>5</sup> / <sub>8</sub>	4 <sup>7</sup> / <sub>8</sub>	2 <sup>7</sup> / <sub>8</sub>	1 <sup>13</sup> / <sub>16</sub>	5 <sup>35</sup> / <sub>64</sub>	3 <sup>47</sup> / <sub>64</sub>	5 <sup>15</sup> / <sub>32</sub>	6 <sup>13</sup> / <sub>16</sub>	5 <sup>35</sup> / <sub>64</sub>	4	3 <sup>5</sup> / <sub>8</sub>	1 <sup>13</sup> / <sub>16</sub>
USTU5000A-303	3 <sup>3</sup> / <sub>16</sub>	10 <sup>7</sup> / <sub>16</sub>	1 <sup>13</sup> / <sub>16</sub>	6 <sup>1</sup> / <sub>4</sub>	7 <sup>5</sup> / <sub>8</sub>	4 <sup>7</sup> / <sub>8</sub>	2 <sup>7</sup> / <sub>8</sub>	1 <sup>13</sup> / <sub>16</sub>	5 <sup>35</sup> / <sub>64</sub>	3 <sup>47</sup> / <sub>64</sub>	5 <sup>15</sup> / <sub>32</sub>	6 <sup>13</sup> / <sub>16</sub>	5 <sup>35</sup> / <sub>64</sub>	4	3 <sup>5</sup> / <sub>8</sub>	1 <sup>13</sup> / <sub>16</sub>
USTU5000A-307	3 <sup>7</sup> / <sub>16</sub>	10 <sup>7</sup> / <sub>16</sub>	1 <sup>13</sup> / <sub>16</sub>	6 <sup>1</sup> / <sub>4</sub>	7 <sup>5</sup> / <sub>8</sub>	4 <sup>7</sup> / <sub>8</sub>	2 <sup>7</sup> / <sub>8</sub>	1 <sup>13</sup> / <sub>16</sub>	5 <sup>35</sup> / <sub>64</sub>	3 <sup>47</sup> / <sub>64</sub>	5 <sup>15</sup> / <sub>32</sub>	6 <sup>13</sup> / <sub>16</sub>	5 <sup>35</sup> / <sub>64</sub>	4	3 <sup>5</sup> / <sub>8</sub>	1 <sup>13</sup> / <sub>16</sub>
USTU5000A-308	3 <sup>1</sup> / <sub>2</sub>	11 <sup>13</sup> / <sub>16</sub>	2 <sup>1</sup> / <sub>8</sub>	7	9 <sup>7</sup> / <sub>16</sub>	5 <sup>5</sup> / <sub>8</sub>	3 <sup>3</sup> / <sub>8</sub>	2 <sup>3</sup> / <sub>16</sub>	5 <sup>15</sup> / <sub>16</sub>	3 <sup>59</sup> / <sub>64</sub>	5 <sup>13</sup> / <sub>16</sub>	8 <sup>5</sup> / <sub>8</sub>	6 <sup>11</sup> / <sub>64</sub>	4 <sup>7</sup> / <sub>16</sub>	4 <sup>1</sup> / <sub>8</sub>	2 <sup>1</sup> / <sub>16</sub>
USTU5000A-311	3 <sup>11</sup> / <sub>16</sub>	11 <sup>13</sup> / <sub>16</sub>	2 <sup>1</sup> / <sub>8</sub>	7	9 <sup>7</sup> / <sub>16</sub>	5 <sup>5</sup> / <sub>8</sub>	3 <sup>3</sup> / <sub>8</sub>	2 <sup>3</sup> / <sub>16</sub>	5 <sup>15</sup> / <sub>16</sub>	3 <sup>59</sup> / <sub>64</sub>	5 <sup>13</sup> / <sub>16</sub>	8 <sup>5</sup> / <sub>8</sub>	6 <sup>11</sup> / <sub>64</sub>	4 <sup>7</sup> / <sub>16</sub>	4 <sup>1</sup> / <sub>8</sub>	2 <sup>1</sup> / <sub>16</sub>
USTU5000A-315	3 <sup>15</sup> / <sub>16</sub>	11 <sup>13</sup> / <sub>16</sub>	2 <sup>1</sup> / <sub>8</sub>	7	9 <sup>7</sup> / <sub>16</sub>	5 <sup>5</sup> / <sub>8</sub>	3 <sup>3</sup> / <sub>8</sub>	2 <sup>3</sup> / <sub>16</sub>	5 <sup>15</sup> / <sub>16</sub>	3 <sup>59</sup> / <sub>64</sub>	5 <sup>13</sup> / <sub>16</sub>	8 <sup>5</sup> / <sub>8</sub>	6 <sup>11</sup> / <sub>64</sub>	4 <sup>7</sup> / <sub>16</sub>	4 <sup>1</sup> / <sub>8</sub>	2 <sup>1</sup> / <sub>16</sub>
USTU5000A-400	4	11 <sup>13</sup> / <sub>16</sub>	2 <sup>1</sup> / <sub>8</sub>	7	9 <sup>7</sup> / <sub>16</sub>	5 <sup>5</sup> / <sub>8</sub>	3 <sup>3</sup> / <sub>8</sub>	2 <sup>3</sup> / <sub>16</sub>	5 <sup>15</sup> / <sub>16</sub>	3 <sup>59</sup> / <sub>64</sub>	5 <sup>13</sup> / <sub>16</sub>	8 <sup>5</sup> / <sub>8</sub>	6 <sup>11</sup> / <sub>64</sub>	4 <sup>7</sup> / <sub>16</sub>	4 <sup>1</sup> / <sub>8</sub>	2 <sup>1</sup> / <sub>16</sub>

**Pillow Block**  
USRBE 5000

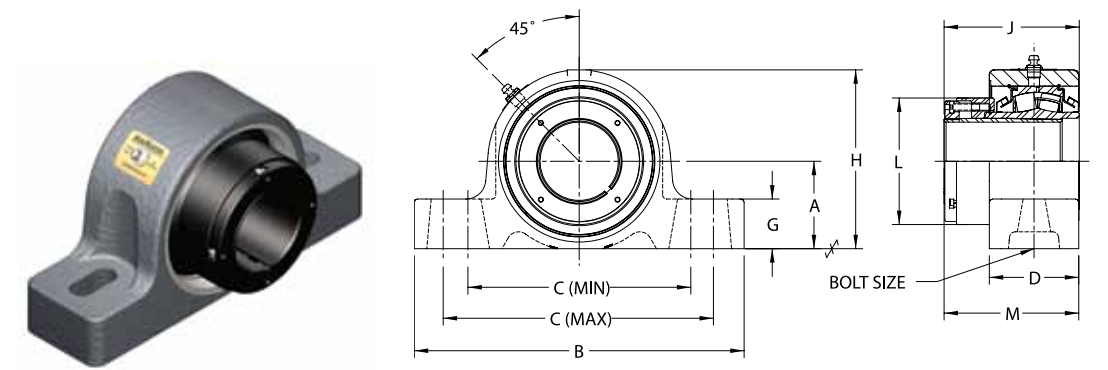


**Two Bolt Base, Collar Mount with Type E Dimensions**

Nomenclature	Shaft Diameter (INCHES)	A	B	C		D	G	H	J	L	M*	Bolt Size
				MIN.	MAX.							
USRBE5000-115	1 <sup>15</sup> / <sub>16</sub>	2 <sup>1</sup> / <sub>4</sub>	8 <sup>7</sup> / <sub>8</sub>	6	7 <sup>1</sup> / <sub>8</sub>	2 <sup>7</sup> / <sub>16</sub>	1 <sup>5</sup> / <sub>16</sub>	4 <sup>17</sup> / <sub>32</sub>	2 <sup>7</sup> / <sub>8</sub>	3	2 <sup>63</sup> / <sub>64</sub>	5/8
USRBE5000-200	2	2 <sup>1</sup> / <sub>2</sub>	9 <sup>5</sup> / <sub>8</sub>	6 <sup>1</sup> / <sub>2</sub>	7 <sup>7</sup> / <sub>8</sub>	2 <sup>1</sup> / <sub>2</sub>	1 <sup>7</sup> / <sub>16</sub>	4 <sup>31</sup> / <sub>32</sub>	3 <sup>1</sup> / <sub>8</sub>	3 <sup>1</sup> / <sub>4</sub>	3 <sup>7</sup> / <sub>64</sub>	5/8
USRBE5000-203	2 <sup>3</sup> / <sub>16</sub>	2 <sup>1</sup> / <sub>2</sub>	9 <sup>5</sup> / <sub>8</sub>	6 <sup>1</sup> / <sub>2</sub>	7 <sup>7</sup> / <sub>8</sub>	2 <sup>1</sup> / <sub>2</sub>	1 <sup>7</sup> / <sub>16</sub>	4 <sup>31</sup> / <sub>32</sub>	3 <sup>1</sup> / <sub>8</sub>	3 <sup>1</sup> / <sub>4</sub>	3 <sup>7</sup> / <sub>64</sub>	5/8
USRBE5000-207	2 <sup>7</sup> / <sub>16</sub>	2 <sup>3</sup> / <sub>4</sub>	10 <sup>3</sup> / <sub>8</sub>	6 <sup>7</sup> / <sub>8</sub>	8 <sup>5</sup> / <sub>8</sub>	2 <sup>13</sup> / <sub>16</sub>	1 <sup>9</sup> / <sub>16</sub>	5 <sup>5</sup> / <sub>8</sub>	3 <sup>3</sup> / <sub>8</sub>	4	3 <sup>11</sup> / <sub>32</sub>	5/8
USRBE5000-208	2 <sup>1</sup> / <sub>2</sub>	2 <sup>3</sup> / <sub>4</sub>	10 <sup>3</sup> / <sub>8</sub>	6 <sup>7</sup> / <sub>8</sub>	8 <sup>5</sup> / <sub>8</sub>	2 <sup>13</sup> / <sub>16</sub>	1 <sup>9</sup> / <sub>16</sub>	5 <sup>5</sup> / <sub>8</sub>	3 <sup>3</sup> / <sub>8</sub>	4	3 <sup>11</sup> / <sub>32</sub>	5/8
USRBE5000-211	2 <sup>11</sup> / <sub>16</sub>	3 <sup>1</sup> / <sub>8</sub>	11 <sup>5</sup> / <sub>8</sub>	7 <sup>7</sup> / <sub>8</sub>	9 <sup>5</sup> / <sub>8</sub>	2 <sup>5</sup> / <sub>8</sub>	1 <sup>5</sup> / <sub>8</sub>	6 <sup>1</sup> / <sub>16</sub>	3 <sup>7</sup> / <sub>8</sub>	4 <sup>17</sup> / <sub>32</sub>	3 <sup>21</sup> / <sub>32</sub>	3/4
USRBE5000-212	2 <sup>3</sup> / <sub>4</sub>											
USRBE5000-215	2 <sup>15</sup> / <sub>16</sub>											
USRBE5000-300	3											
USRBE5000-303	3 <sup>3</sup> / <sub>16</sub>	3 <sup>3</sup> / <sub>4</sub>	13 <sup>1</sup> / <sub>2</sub>	9 <sup>3</sup> / <sub>8</sub>	11 <sup>1</sup> / <sub>4</sub>	3 <sup>1</sup> / <sub>8</sub>	2 <sup>1</sup> / <sub>16</sub>	7 <sup>3</sup> / <sub>8</sub>	4 <sup>15</sup> / <sub>32</sub>	5 <sup>5</sup> / <sub>16</sub>	4 <sup>13</sup> / <sub>64</sub>	7/8
USRBE5000-307	3 <sup>7</sup> / <sub>16</sub>											
USRBE5000-308	3 <sup>1</sup> / <sub>2</sub>											
USRBE5000-311	3 <sup>11</sup> / <sub>16</sub>	4 <sup>1</sup> / <sub>8</sub>	14 <sup>1</sup> / <sub>4</sub>	10	11 <sup>3</sup> / <sub>4</sub>	3 <sup>9</sup> / <sub>16</sub>	2 <sup>1</sup> / <sub>4</sub>	8 <sup>1</sup> / <sub>2</sub>	4 <sup>15</sup> / <sub>16</sub>	6	4 <sup>23</sup> / <sub>32</sub>	1
USRBE5000-315	3 <sup>15</sup> / <sub>16</sub>											
USRBE5000-400	4											

Housings are ductile iron.  
\* For expansion bearings, this dimension can increase by the corresponding value listed in Table 7 on page 28.

**Pillow Block**  
USRBE 5000A

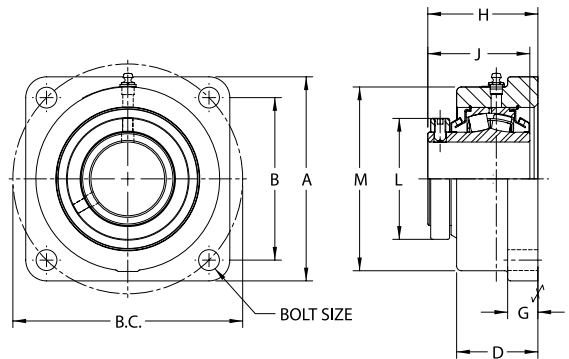


**Two Bolt Base, Adapter Mount with Type E Dimensions**

Nomenclature	Shaft Diameter (INCHES)	A	B	C		D	G	H	J	L	M*	Bolt Size
				MIN.	MAX.							
USRBE5000A-115	1 <sup>15</sup> / <sub>16</sub>	2 <sup>1</sup> / <sub>4</sub>	8 <sup>7</sup> / <sub>8</sub>	6	7 <sup>1</sup> / <sub>8</sub>	2 <sup>7</sup> / <sub>16</sub>	1 <sup>5</sup> / <sub>16</sub>	4 <sup>17</sup> / <sub>32</sub>	3 <sup>1</sup> / <sub>2</sub>	3 <sup>3</sup> / <sub>16</sub>	3 <sup>19</sup> / <sub>32</sub>	5/8
USRBE5000A-200	2	2 <sup>1</sup> / <sub>2</sub>	9 <sup>5</sup> / <sub>8</sub>	6 <sup>1</sup> / <sub>2</sub>	7 <sup>7</sup> / <sub>8</sub>	2 <sup>1</sup> / <sub>2</sub>	1 <sup>7</sup> / <sub>16</sub>	4 <sup>31</sup> / <sub>32</sub>	3 <sup>5</sup> / <sub>8</sub>	3 <sup>29</sup> / <sub>64</sub>	3 <sup>7</sup> / <sub>8</sub>	5/8
USRBE5000A-203	2 <sup>3</sup> / <sub>16</sub>	2 <sup>1</sup> / <sub>2</sub>	9 <sup>5</sup> / <sub>8</sub>	6 <sup>1</sup> / <sub>2</sub>	7 <sup>7</sup> / <sub>8</sub>	2 <sup>1</sup> / <sub>2</sub>	1 <sup>7</sup> / <sub>16</sub>	4 <sup>31</sup> / <sub>32</sub>	3 <sup>5</sup> / <sub>8</sub>	3 <sup>29</sup> / <sub>64</sub>	3 <sup>7</sup> / <sub>8</sub>	5/8
USRBE5000A-207	2 <sup>7</sup> / <sub>16</sub>	2 <sup>3</sup> / <sub>4</sub>	10 <sup>3</sup> / <sub>8</sub>	6 <sup>7</sup> / <sub>8</sub>	8 <sup>5</sup> / <sub>8</sub>	2 <sup>13</sup> / <sub>16</sub>	1 <sup>9</sup> / <sub>16</sub>	5 <sup>5</sup> / <sub>8</sub>	4 <sup>5</sup> / <sub>16</sub>	3 <sup>63</sup> / <sub>64</sub>	4 <sup>19</sup> / <sub>64</sub>	5/8
USRBE5000A-208	2 <sup>1</sup> / <sub>2</sub>	2 <sup>3</sup> / <sub>4</sub>	10 <sup>3</sup> / <sub>8</sub>	6 <sup>7</sup> / <sub>8</sub>	8 <sup>5</sup> / <sub>8</sub>	2 <sup>13</sup> / <sub>16</sub>	1 <sup>9</sup> / <sub>16</sub>	5 <sup>5</sup> / <sub>8</sub>	4 <sup>5</sup> / <sub>16</sub>	3 <sup>63</sup> / <sub>64</sub>	4 <sup>19</sup> / <sub>64</sub>	5/8
USRBE5000A-211	2 <sup>11</sup> / <sub>16</sub>	3 <sup>1</sup> / <sub>8</sub>	11 <sup>5</sup> / <sub>8</sub>	7 <sup>7</sup> / <sub>8</sub>	9 <sup>5</sup> / <sub>8</sub>	2 <sup>5</sup> / <sub>8</sub>	1 <sup>5</sup> / <sub>8</sub>	6 <sup>1</sup> / <sub>16</sub>	4 <sup>31</sup> / <sub>64</sub>	4 <sup>25</sup> / <sub>64</sub>	4 <sup>17</sup> / <sub>64</sub>	3/4
USRBE5000A-212	2 <sup>3</sup> / <sub>4</sub>											
USRBE5000A-215	2 <sup>15</sup> / <sub>16</sub>											
USRBE5000A-300	3											
USRBE5000A-303	3 <sup>3</sup> / <sub>16</sub>	3 <sup>3</sup> / <sub>4</sub>	13 <sup>1</sup> / <sub>2</sub>	9 <sup>3</sup> / <sub>8</sub>	11 <sup>1</sup> / <sub>4</sub>	3 <sup>1</sup> / <sub>8</sub>	2 <sup>1</sup> / <sub>16</sub>	7 <sup>3</sup> / <sub>8</sub>	5 <sup>35</sup> / <sub>64</sub>	5 <sup>15</sup> / <sub>32</sub>	5 <sup>19</sup> / <sub>64</sub>	7/8
USRBE5000A-307	3 <sup>7</sup> / <sub>16</sub>											
USRBE5000A-308	3 <sup>1</sup> / <sub>2</sub>											
USRBE5000A-311	3 <sup>11</sup> / <sub>16</sub>	4 <sup>1</sup> / <sub>8</sub>	14 <sup>1</sup> / <sub>4</sub>	10	11 <sup>3</sup> / <sub>4</sub>	3 <sup>9</sup> / <sub>16</sub>	2 <sup>1</sup> / <sub>4</sub>	8 <sup>1</sup> / <sub>2</sub>	5 <sup>15</sup> / <sub>16</sub>	5 <sup>13</sup> / <sub>16</sub>	5 <sup>23</sup> / <sub>32</sub>	1
USRBE5000A-315	3 <sup>15</sup> / <sub>16</sub>											
USRBE5000A-400	4											

Housings are ductile iron.  
\* For expansion bearings, this dimension can increase by the corresponding value listed in Table 7 on page 28.

## Flange Block USFBE 5000



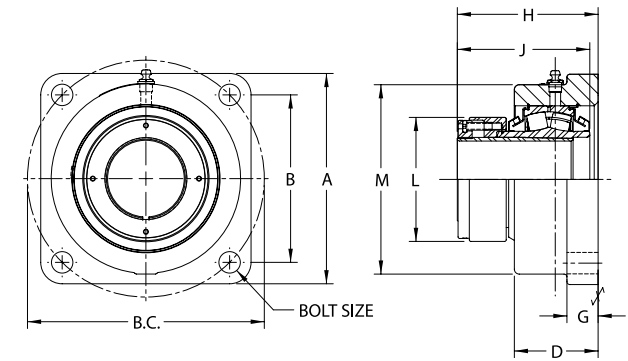
### Four Bolt Base, Collar Mount with Type E Dimensions

Nomenclature	Shaft Diameter (INCHES)	A	B	B.C.	D	G	H*	J	L	M	Bolt Size
USFBE5000-115	1 <sup>15</sup> / <sub>16</sub>	5 <sup>1</sup> / <sub>2</sub>	4 <sup>3</sup> / <sub>8</sub>	6 <sup>3</sup> / <sub>16</sub>	2 <sup>9</sup> / <sub>16</sub>	7/8	2 <sup>29</sup> / <sub>32</sub>	2 <sup>7</sup> / <sub>8</sub>	3	4 <sup>31</sup> / <sub>32</sub>	1/2
USFBE5000-200	2										
USFBE5000-203	2 <sup>3</sup> / <sub>16</sub>	6 <sup>3</sup> / <sub>16</sub>	4 <sup>7</sup> / <sub>8</sub>	6 <sup>57</sup> / <sub>64</sub>	2 <sup>5</sup> / <sub>8</sub>	1	3 <sup>5</sup> / <sub>32</sub>	3 <sup>1</sup> / <sub>8</sub>	3 <sup>1</sup> / <sub>4</sub>	5 <sup>15</sup> / <sub>32</sub>	5/8
USFBE5000-207	2 <sup>7</sup> / <sub>16</sub>	6 <sup>3</sup> / <sub>4</sub>	5 <sup>3</sup> / <sub>8</sub>	7 <sup>19</sup> / <sub>32</sub>	2 <sup>11</sup> / <sub>16</sub>	1	3 <sup>13</sup> / <sub>32</sub>	3 <sup>3</sup> / <sub>8</sub>	4	6 <sup>3</sup> / <sub>32</sub>	5/8
USFBE5000-208	2 <sup>1</sup> / <sub>2</sub>										
USFBE5000-211	2 <sup>11</sup> / <sub>16</sub>										
USFBE5000-212	2 <sup>3</sup> / <sub>4</sub>	7 <sup>5</sup> / <sub>8</sub>	6	8 <sup>31</sup> / <sub>64</sub>	2 <sup>3</sup> / <sub>4</sub>	1 <sup>1</sup> / <sub>16</sub>	3 <sup>57</sup> / <sub>64</sub>	3 <sup>7</sup> / <sub>8</sub>	4 <sup>17</sup> / <sub>32</sub>	6 <sup>53</sup> / <sub>64</sub>	3/4
USFBE5000-215	2 <sup>15</sup> / <sub>16</sub>										
USFBE5000-300	3										
USFBE5000-303	3 <sup>3</sup> / <sub>16</sub>	8 <sup>5</sup> / <sub>8</sub>	7	9 <sup>29</sup> / <sub>32</sub>	3 <sup>1</sup> / <sub>4</sub>	1 <sup>1</sup> / <sub>4</sub>	4 <sup>33</sup> / <sub>64</sub>	4 <sup>15</sup> / <sub>32</sub>	5 <sup>5</sup> / <sub>16</sub>	7 <sup>31</sup> / <sub>32</sub>	3/4
USFBE5000-307	3 <sup>7</sup> / <sub>16</sub>										
USFBE5000-308	3 <sup>1</sup> / <sub>2</sub>										
USFBE5000-311	3 <sup>11</sup> / <sub>16</sub>										
USFBE5000-315	3 <sup>15</sup> / <sub>16</sub>	9 <sup>1</sup> / <sub>2</sub>	7 <sup>19</sup> / <sub>32</sub>	10 <sup>3</sup> / <sub>4</sub>	3 <sup>11</sup> / <sub>16</sub>	1 <sup>1</sup> / <sub>4</sub>	4 <sup>31</sup> / <sub>32</sub>	4 <sup>15</sup> / <sub>16</sub>	6	8 <sup>27</sup> / <sub>64</sub>	7/8
USFBE5000-400	4										

Housings are ductile iron.

\* For expansion bearings, this dimension can increase by the corresponding value listed in Table 7 on page 28.

## Flange Block USFBE 5000A



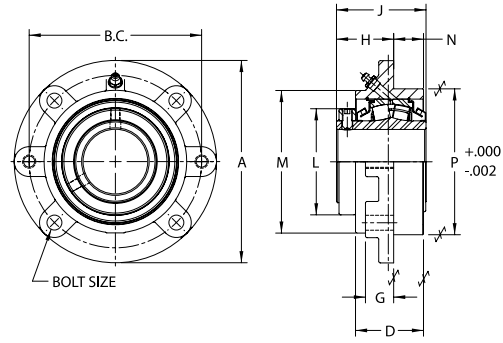
### Four Bolt Base, Adapter Mount with Type E Dimensions

Nomenclature	Shaft Diameter (INCHES)	A	B	B.C.	D	G	H*	J	L	M	Bolt Size
USFBE5000A-115	1 <sup>15</sup> / <sub>16</sub>	5 <sup>1</sup> / <sub>2</sub>	4 <sup>3</sup> / <sub>8</sub>	6 <sup>3</sup> / <sub>16</sub>	2 <sup>9</sup> / <sub>16</sub>	7/8	3 <sup>17</sup> / <sub>32</sub>	3 <sup>1</sup> / <sub>2</sub>	3 <sup>3</sup> / <sub>16</sub>	4 <sup>31</sup> / <sub>32</sub>	1/2
USFBE5000A-200	2										
USFBE5000A-203	2 <sup>3</sup> / <sub>16</sub>	6 <sup>3</sup> / <sub>16</sub>	4 <sup>7</sup> / <sub>8</sub>	6 <sup>57</sup> / <sub>64</sub>	2 <sup>5</sup> / <sub>8</sub>	1	3 <sup>29</sup> / <sub>32</sub>	3 <sup>57</sup> / <sub>64</sub>	3 <sup>29</sup> / <sub>64</sub>	5 <sup>15</sup> / <sub>32</sub>	5/8
USFBE5000A-207	2 <sup>7</sup> / <sub>16</sub>	6 <sup>3</sup> / <sub>4</sub>	5 <sup>3</sup> / <sub>8</sub>	7 <sup>19</sup> / <sub>32</sub>	2 <sup>11</sup> / <sub>16</sub>	1	4 <sup>21</sup> / <sub>64</sub>	4 <sup>5</sup> / <sub>16</sub>	3 <sup>63</sup> / <sub>64</sub>	6 <sup>3</sup> / <sub>32</sub>	5/8
USFBE5000A-208	2 <sup>1</sup> / <sub>2</sub>										
USFBE5000A-211	2 <sup>11</sup> / <sub>16</sub>										
USFBE5000A-212	2 <sup>3</sup> / <sub>4</sub>	7 <sup>5</sup> / <sub>8</sub>	6	8 <sup>31</sup> / <sub>64</sub>	2 <sup>3</sup> / <sub>4</sub>	1 <sup>1</sup> / <sub>16</sub>	4 <sup>33</sup> / <sub>64</sub>	4 <sup>31</sup> / <sub>64</sub>	4 <sup>25</sup> / <sub>64</sub>	6 <sup>53</sup> / <sub>64</sub>	3/4
USFBE5000A-215	2 <sup>15</sup> / <sub>16</sub>										
USFBE5000A-300	3										
USFBE5000A-303	3 <sup>3</sup> / <sub>16</sub>	8 <sup>5</sup> / <sub>8</sub>	7	9 <sup>29</sup> / <sub>32</sub>	3 <sup>1</sup> / <sub>4</sub>	1 <sup>1</sup> / <sub>4</sub>	5 <sup>19</sup> / <sub>32</sub>	5 <sup>35</sup> / <sub>64</sub>	5 <sup>15</sup> / <sub>32</sub>	7 <sup>31</sup> / <sub>32</sub>	3/4
USFBE5000A-307	3 <sup>7</sup> / <sub>16</sub>										
USFBE5000A-308	3 <sup>1</sup> / <sub>2</sub>										
USFBE5000A-311	3 <sup>11</sup> / <sub>16</sub>										
USFBE5000A-315	3 <sup>15</sup> / <sub>16</sub>	9 <sup>1</sup> / <sub>2</sub>	7 <sup>19</sup> / <sub>32</sub>	10 <sup>3</sup> / <sub>4</sub>	3 <sup>11</sup> / <sub>16</sub>	1 <sup>1</sup> / <sub>4</sub>	5 <sup>63</sup> / <sub>64</sub>	5 <sup>15</sup> / <sub>16</sub>	5 <sup>13</sup> / <sub>16</sub>	8 <sup>27</sup> / <sub>64</sub>	7/8
USFBE5000A-400	4										

Housings are ductile iron.

\* For expansion bearings, this dimension can increase by the corresponding value listed in Table 7 on page 28.

## Flange Cartridge USFCE 5000



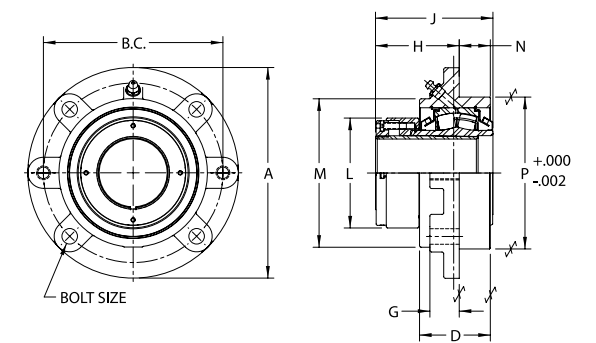
### Collar Mount with Type E Dimensions

Nomenclature	Shaft Diameter (INCHES)	A	B.C.	D	G	H*	J	L	M	N	P	Bolt Size
USFCE5000-115	1 <sup>15</sup> / <sub>16</sub>	6 <sup>3</sup> / <sub>8</sub>	5 <sup>3</sup> / <sub>8</sub>	2 <sup>7</sup> / <sub>16</sub>	1	1 <sup>57</sup> / <sub>64</sub>	2 <sup>7</sup> / <sub>8</sub>	3	4 <sup>1</sup> / <sub>2</sub>	1 <sup>1</sup> / <sub>16</sub>	4 <sup>1</sup> / <sub>2</sub>	3/8
USFCE5000-200	2	7 <sup>1</sup> / <sub>8</sub>	6	2 <sup>1</sup> / <sub>2</sub>	1	1 <sup>63</sup> / <sub>64</sub>	3 <sup>1</sup> / <sub>8</sub>	3 <sup>1</sup> / <sub>4</sub>	4 <sup>7</sup> / <sub>8</sub>	1 <sup>1</sup> / <sub>8</sub>	5	1/2
USFCE5000-203	2 <sup>3</sup> / <sub>16</sub>	7 <sup>1</sup> / <sub>8</sub>	6	2 <sup>1</sup> / <sub>2</sub>	1	1 <sup>63</sup> / <sub>64</sub>	3 <sup>1</sup> / <sub>8</sub>	3 <sup>1</sup> / <sub>4</sub>	4 <sup>7</sup> / <sub>8</sub>	1 <sup>1</sup> / <sub>8</sub>	5	1/2
USFCE5000-207	2 <sup>7</sup> / <sub>16</sub>	7 <sup>5</sup> / <sub>8</sub>	6 <sup>1</sup> / <sub>2</sub>	2 <sup>9</sup> / <sub>16</sub>	1 <sup>1</sup> / <sub>16</sub>	2 <sup>9</sup> / <sub>64</sub>	3 <sup>3</sup> / <sub>8</sub>	4	5 <sup>3</sup> / <sub>8</sub>	1 <sup>1</sup> / <sub>8</sub>	5 <sup>1</sup> / <sub>2</sub>	1/2
USFCE5000-208	2 <sup>1</sup> / <sub>2</sub>	7 <sup>5</sup> / <sub>8</sub>	6 <sup>1</sup> / <sub>2</sub>	2 <sup>9</sup> / <sub>16</sub>	1 <sup>1</sup> / <sub>16</sub>	2 <sup>9</sup> / <sub>64</sub>	3 <sup>3</sup> / <sub>8</sub>	4	5 <sup>3</sup> / <sub>8</sub>	1 <sup>1</sup> / <sub>8</sub>	5 <sup>1</sup> / <sub>2</sub>	1/2
USFCE5000-211	2 <sup>11</sup> / <sub>16</sub>	8 <sup>3</sup> / <sub>4</sub>	7 <sup>1</sup> / <sub>2</sub>	2 <sup>9</sup> / <sub>16</sub>	1 <sup>15</sup> / <sub>16</sub>	2 <sup>27</sup> / <sub>64</sub>	3 <sup>7</sup> / <sub>8</sub>	4 <sup>17</sup> / <sub>32</sub>	6 <sup>1</sup> / <sub>4</sub>	1 <sup>1</sup> / <sub>4</sub>	6 <sup>3</sup> / <sub>8</sub>	5/8
USFCE5000-212	2 <sup>3</sup> / <sub>4</sub>	8 <sup>3</sup> / <sub>4</sub>	7 <sup>1</sup> / <sub>2</sub>	2 <sup>9</sup> / <sub>16</sub>	1 <sup>15</sup> / <sub>16</sub>	2 <sup>27</sup> / <sub>64</sub>	3 <sup>7</sup> / <sub>8</sub>	4 <sup>17</sup> / <sub>32</sub>	6 <sup>1</sup> / <sub>4</sub>	1 <sup>1</sup> / <sub>4</sub>	6 <sup>3</sup> / <sub>8</sub>	5/8
USFCE5000-215	2 <sup>15</sup> / <sub>16</sub>	8 <sup>3</sup> / <sub>4</sub>	7 <sup>1</sup> / <sub>2</sub>	2 <sup>9</sup> / <sub>16</sub>	1 <sup>15</sup> / <sub>16</sub>	2 <sup>27</sup> / <sub>64</sub>	3 <sup>7</sup> / <sub>8</sub>	4 <sup>17</sup> / <sub>32</sub>	6 <sup>1</sup> / <sub>4</sub>	1 <sup>1</sup> / <sub>4</sub>	6 <sup>3</sup> / <sub>8</sub>	5/8
USFCE5000-300	3	10 <sup>1</sup> / <sub>4</sub>	8 <sup>5</sup> / <sub>8</sub>	3 <sup>1</sup> / <sub>8</sub>	1 <sup>7</sup> / <sub>16</sub>	2 <sup>15</sup> / <sub>16</sub>	4 <sup>15</sup> / <sub>32</sub>	5 <sup>5</sup> / <sub>16</sub>	7 <sup>1</sup> / <sub>8</sub>	1 <sup>5</sup> / <sub>16</sub>	7 <sup>3</sup> / <sub>8</sub>	3/4
USFCE5000-303	3 <sup>3</sup> / <sub>16</sub>	10 <sup>1</sup> / <sub>4</sub>	8 <sup>5</sup> / <sub>8</sub>	3 <sup>1</sup> / <sub>8</sub>	1 <sup>7</sup> / <sub>16</sub>	2 <sup>15</sup> / <sub>16</sub>	4 <sup>15</sup> / <sub>32</sub>	5 <sup>5</sup> / <sub>16</sub>	7 <sup>1</sup> / <sub>8</sub>	1 <sup>5</sup> / <sub>16</sub>	7 <sup>3</sup> / <sub>8</sub>	3/4
USFCE5000-307	3 <sup>7</sup> / <sub>16</sub>	10 <sup>1</sup> / <sub>4</sub>	8 <sup>5</sup> / <sub>8</sub>	3 <sup>1</sup> / <sub>8</sub>	1 <sup>7</sup> / <sub>16</sub>	2 <sup>15</sup> / <sub>16</sub>	4 <sup>15</sup> / <sub>32</sub>	5 <sup>5</sup> / <sub>16</sub>	7 <sup>1</sup> / <sub>8</sub>	1 <sup>5</sup> / <sub>16</sub>	7 <sup>3</sup> / <sub>8</sub>	3/4
USFCE5000-308	3 <sup>1</sup> / <sub>2</sub>	10 <sup>1</sup> / <sub>4</sub>	8 <sup>5</sup> / <sub>8</sub>	3 <sup>1</sup> / <sub>8</sub>	1 <sup>7</sup> / <sub>16</sub>	2 <sup>15</sup> / <sub>16</sub>	4 <sup>15</sup> / <sub>32</sub>	5 <sup>5</sup> / <sub>16</sub>	7 <sup>1</sup> / <sub>8</sub>	1 <sup>5</sup> / <sub>16</sub>	7 <sup>3</sup> / <sub>8</sub>	3/4
USFCE5000-311	3 <sup>11</sup> / <sub>16</sub>	10 <sup>7</sup> / <sub>8</sub>	9 <sup>3</sup> / <sub>8</sub>	3 <sup>1</sup> / <sub>2</sub>	1 <sup>1</sup> / <sub>16</sub>	2 <sup>21</sup> / <sub>32</sub>	4 <sup>15</sup> / <sub>16</sub>	6	7 <sup>3</sup> / <sub>4</sub>	2 <sup>1</sup> / <sub>16</sub>	8 <sup>1</sup> / <sub>8</sub>	3/4
USFCE5000-315	3 <sup>15</sup> / <sub>16</sub>	10 <sup>7</sup> / <sub>8</sub>	9 <sup>3</sup> / <sub>8</sub>	3 <sup>1</sup> / <sub>2</sub>	1 <sup>1</sup> / <sub>16</sub>	2 <sup>21</sup> / <sub>32</sub>	4 <sup>15</sup> / <sub>16</sub>	6	7 <sup>3</sup> / <sub>4</sub>	2 <sup>1</sup> / <sub>16</sub>	8 <sup>1</sup> / <sub>8</sub>	3/4
USFCE5000-400	4	10 <sup>7</sup> / <sub>8</sub>	9 <sup>3</sup> / <sub>8</sub>	3 <sup>1</sup> / <sub>2</sub>	1 <sup>1</sup> / <sub>16</sub>	2 <sup>21</sup> / <sub>32</sub>	4 <sup>15</sup> / <sub>16</sub>	6	7 <sup>3</sup> / <sub>4</sub>	2 <sup>1</sup> / <sub>16</sub>	8 <sup>1</sup> / <sub>8</sub>	3/4

Housings are ductile iron.

\* For expansion bearings, this dimension can increase by the corresponding value listed in Table 7 on page 28.

## Flange Cartridge USFCE 5000A



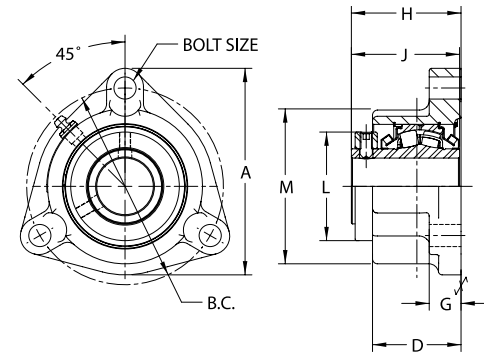
### Adapter Mount with Type E Dimensions

Nomenclature	Shaft Diameter (INCHES)	A	B.C.	D	G	H*	J	L	M	N	P	Bolt Size
USFCE5000A-115	1 <sup>15</sup> / <sub>16</sub>	6 <sup>3</sup> / <sub>8</sub>	5 <sup>3</sup> / <sub>8</sub>	2 <sup>7</sup> / <sub>16</sub>	1	2 <sup>33</sup> / <sub>64</sub>	3 <sup>1</sup> / <sub>2</sub>	3 <sup>3</sup> / <sub>16</sub>	4 <sup>1</sup> / <sub>2</sub>	1 <sup>1</sup> / <sub>16</sub>	4 <sup>1</sup> / <sub>2</sub>	3/8
USFCE5000A-200	2	7 <sup>1</sup> / <sub>8</sub>	6	2 <sup>1</sup> / <sub>2</sub>	1	2 <sup>3</sup> / <sub>4</sub>	3 <sup>57</sup> / <sub>64</sub>	3 <sup>29</sup> / <sub>64</sub>	4 <sup>7</sup> / <sub>8</sub>	1 <sup>1</sup> / <sub>8</sub>	5	1/2
USFCE5000A-203	2 <sup>3</sup> / <sub>16</sub>	7 <sup>1</sup> / <sub>8</sub>	6	2 <sup>1</sup> / <sub>2</sub>	1	2 <sup>3</sup> / <sub>4</sub>	3 <sup>57</sup> / <sub>64</sub>	3 <sup>29</sup> / <sub>64</sub>	4 <sup>7</sup> / <sub>8</sub>	1 <sup>1</sup> / <sub>8</sub>	5	1/2
USFCE5000A-207	2 <sup>7</sup> / <sub>16</sub>	7 <sup>5</sup> / <sub>8</sub>	6 <sup>1</sup> / <sub>2</sub>	2 <sup>9</sup> / <sub>16</sub>	1 <sup>1</sup> / <sub>16</sub>	3 <sup>5</sup> / <sub>64</sub>	4 <sup>5</sup> / <sub>16</sub>	3 <sup>63</sup> / <sub>64</sub>	5 <sup>3</sup> / <sub>8</sub>	1 <sup>1</sup> / <sub>8</sub>	5 <sup>1</sup> / <sub>2</sub>	1/2
USFCE5000A-208	2 <sup>1</sup> / <sub>2</sub>	7 <sup>5</sup> / <sub>8</sub>	6 <sup>1</sup> / <sub>2</sub>	2 <sup>9</sup> / <sub>16</sub>	1 <sup>1</sup> / <sub>16</sub>	3 <sup>5</sup> / <sub>64</sub>	4 <sup>5</sup> / <sub>16</sub>	3 <sup>63</sup> / <sub>64</sub>	5 <sup>3</sup> / <sub>8</sub>	1 <sup>1</sup> / <sub>8</sub>	5 <sup>1</sup> / <sub>2</sub>	1/2
USFCE5000A-211	2 <sup>11</sup> / <sub>16</sub>	8 <sup>3</sup> / <sub>4</sub>	7 <sup>1</sup> / <sub>2</sub>	2 <sup>9</sup> / <sub>16</sub>	1 <sup>15</sup> / <sub>16</sub>	3 <sup>3</sup> / <sub>64</sub>	4 <sup>31</sup> / <sub>64</sub>	4 <sup>25</sup> / <sub>64</sub>	6 <sup>1</sup> / <sub>4</sub>	1 <sup>1</sup> / <sub>4</sub>	6 <sup>3</sup> / <sub>8</sub>	5/8
USFCE5000A-212	2 <sup>3</sup> / <sub>4</sub>	8 <sup>3</sup> / <sub>4</sub>	7 <sup>1</sup> / <sub>2</sub>	2 <sup>9</sup> / <sub>16</sub>	1 <sup>15</sup> / <sub>16</sub>	3 <sup>3</sup> / <sub>64</sub>	4 <sup>31</sup> / <sub>64</sub>	4 <sup>25</sup> / <sub>64</sub>	6 <sup>1</sup> / <sub>4</sub>	1 <sup>1</sup> / <sub>4</sub>	6 <sup>3</sup> / <sub>8</sub>	5/8
USFCE5000A-215	2 <sup>15</sup> / <sub>16</sub>	8 <sup>3</sup> / <sub>4</sub>	7 <sup>1</sup> / <sub>2</sub>	2 <sup>9</sup> / <sub>16</sub>	1 <sup>15</sup> / <sub>16</sub>	3 <sup>3</sup> / <sub>64</sub>	4 <sup>31</sup> / <sub>64</sub>	4 <sup>25</sup> / <sub>64</sub>	6 <sup>1</sup> / <sub>4</sub>	1 <sup>1</sup> / <sub>4</sub>	6 <sup>3</sup> / <sub>8</sub>	5/8
USFCE5000A-300	3	10 <sup>1</sup> / <sub>4</sub>	8 <sup>5</sup> / <sub>8</sub>	3 <sup>1</sup> / <sub>8</sub>	1 <sup>7</sup> / <sub>16</sub>	4 <sup>1</sup> / <sub>32</sub>	5 <sup>5</sup> / <sub>64</sub>	5 <sup>15</sup> / <sub>32</sub>	7 <sup>1</sup> / <sub>8</sub>	1 <sup>5</sup> / <sub>16</sub>	7 <sup>3</sup> / <sub>8</sub>	3/4
USFCE5000A-303	3 <sup>3</sup> / <sub>16</sub>	10 <sup>1</sup> / <sub>4</sub>	8 <sup>5</sup> / <sub>8</sub>	3 <sup>1</sup> / <sub>8</sub>	1 <sup>7</sup> / <sub>16</sub>	4 <sup>1</sup> / <sub>32</sub>	5 <sup>5</sup> / <sub>64</sub>	5 <sup>15</sup> / <sub>32</sub>	7 <sup>1</sup> / <sub>8</sub>	1 <sup>5</sup> / <sub>16</sub>	7 <sup>3</sup> / <sub>8</sub>	3/4
USFCE5000A-307	3 <sup>7</sup> / <sub>16</sub>	10 <sup>1</sup> / <sub>4</sub>	8 <sup>5</sup> / <sub>8</sub>	3 <sup>1</sup> / <sub>8</sub>	1 <sup>7</sup> / <sub>16</sub>	4 <sup>1</sup> / <sub>32</sub>	5 <sup>5</sup> / <sub>64</sub>	5 <sup>15</sup> / <sub>32</sub>	7 <sup>1</sup> / <sub>8</sub>	1 <sup>5</sup> / <sub>16</sub>	7 <sup>3</sup> / <sub>8</sub>	3/4
USFCE5000A-308	3 <sup>1</sup> / <sub>2</sub>	10 <sup>1</sup> / <sub>4</sub>	8 <sup>5</sup> / <sub>8</sub>	3 <sup>1</sup> / <sub>8</sub>	1 <sup>7</sup> / <sub>16</sub>	4 <sup>1</sup> / <sub>32</sub>	5 <sup>5</sup> / <sub>64</sub>	5 <sup>15</sup> / <sub>32</sub>	7 <sup>1</sup> / <sub>8</sub>	1 <sup>5</sup> / <sub>16</sub>	7 <sup>3</sup> / <sub>8</sub>	3/4
USFCE5000A-311	3 <sup>11</sup> / <sub>16</sub>	10 <sup>7</sup> / <sub>8</sub>	9 <sup>3</sup> / <sub>8</sub>	3 <sup>1</sup> / <sub>2</sub>	1 <sup>1</sup> / <sub>16</sub>	3 <sup>21</sup> / <sub>32</sub>	5 <sup>15</sup> / <sub>16</sub>	5 <sup>13</sup> / <sub>16</sub>	7 <sup>3</sup> / <sub>4</sub>	2 <sup>1</sup> / <sub>16</sub>	8 <sup>1</sup> / <sub>8</sub>	3/4
USFCE5000A-315	3 <sup>15</sup> / <sub>16</sub>	10 <sup>7</sup> / <sub>8</sub>	9 <sup>3</sup> / <sub>8</sub>	3 <sup>1</sup> / <sub>2</sub>	1 <sup>1</sup> / <sub>16</sub>	3 <sup>21</sup> / <sub>32</sub>	5 <sup>15</sup> / <sub>16</sub>	5 <sup>13</sup> / <sub>16</sub>	7 <sup>3</sup> / <sub>4</sub>	2 <sup>1</sup> / <sub>16</sub>	8 <sup>1</sup> / <sub>8</sub>	3/4
USFCE5000A-400	4	10 <sup>7</sup> / <sub>8</sub>	9 <sup>3</sup> / <sub>8</sub>	3 <sup>1</sup> / <sub>2</sub>	1 <sup>1</sup> / <sub>16</sub>	3 <sup>21</sup> / <sub>32</sub>	5 <sup>15</sup> / <sub>16</sub>	5 <sup>13</sup> / <sub>16</sub>	7 <sup>3</sup> / <sub>4</sub>	2 <sup>1</sup> / <sub>16</sub>	8 <sup>1</sup> / <sub>8</sub>	3/4

Housings are ductile iron.

\* For expansion bearings, this dimension can increase by the corresponding value listed in Table 7 on page 28.

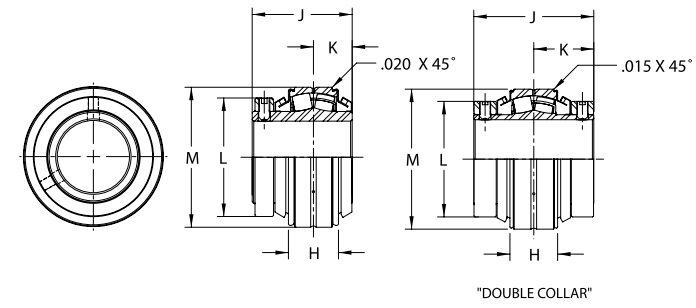
## Flange Block USF3B 5000



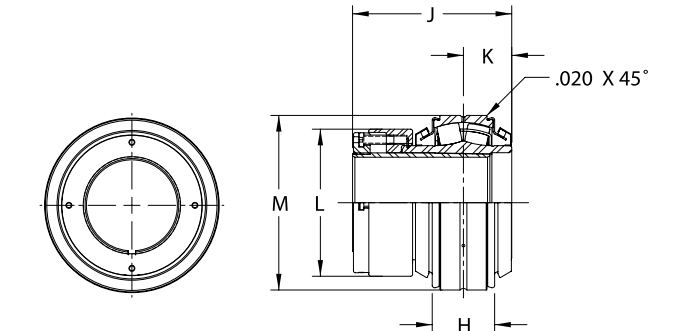
### Three Bolt Base, Collar Mount

Nomenclature	Shaft Diameter (INCHES)	A	B.C.	D	G	H*	J	L	M	Bolt Size
USF3B5000-102	1 1/8	5 1/4	4 1/2	2 1/4	13/16	2 25/32	2 3/4	2 49/64	3 15/16	3/8
USF3B5000-103	1 3/16	5 1/4	4 1/2	2 1/4	13/16	2 25/32	2 3/4	2 49/64	3 15/16	3/8
USF3B5000-104	1 1/4	5 1/4	4 1/2	2 1/4	13/16	2 25/32	2 3/4	2 49/64	3 15/16	3/8
USF3B5000-106	1 3/8	5 1/4	5	2 1/4	13/16	2 25/32	2 3/4	2 49/64	3 15/16	1/2
USF3B5000-107	1 7/16	5 1/4	5	2 1/4	13/16	2 25/32	2 3/4	2 49/64	3 15/16	1/2
USF3B5000-108	1 1/2	5 1/4	5	2 1/4	13/16	2 25/32	2 3/4	2 49/64	3 15/16	1/2

\* For expansion bearings, this dimension can increase by the corresponding value listed in Table 7 on page 28.



## Spherical Insert USI 5000



## Spherical Insert USI 5000A



### Collar Mount

Nomenclature	Bore (INCHES)	H	J	K	L	M (Nominal)
USI5000-102	1 1/8					
USI5000-103	1 3/16					
USI5000-104	1 1/4	1 15/64	2 3/4	1	2 49/64	3.1493
USI5000-106	1 3/8	1 15/64	2 3/4	1	2 49/64	3.1493
USI5000-107	1 7/16	1 15/64	2 3/4	1	2 49/64	3.1493
USI5000-108	1 1/2	1 15/64	2 3/4	1	2 49/64	3.1493
USI5000-111	1 11/16	1 7/32	2 7/8	1 3/64	2 3/4	3.3462
USI5000-112	1 3/4	1 7/32	2 7/8	1 3/64	2 3/4	3.3462
USI5000-115	1 15/16	1 17/64	2 7/8	1 1/16	3	3.5430
USI5000-200	2	1 17/64	2 7/8	1 1/16	3	3.5430
USI5000-203	2 3/16	1 23/64	3 1/8	1 9/64	3 1/4	3.9367
USI5000-207	2 7/16	1 11/16	3 3/8	1 5/16	4	4.7242
USI5000-208	2 1/2	1 11/16	3 3/8	1 5/16	4	4.7242
USI5000-211	2 11/16	1 23/32	3 7/8	1 25/64	4 17/32	5.1180
USI5000-212	2 3/4	1 23/32	3 7/8	1 25/64	4 17/32	5.1180
USI5000-215	2 15/16	1 23/32	3 7/8	1 25/64	4 17/32	5.1180
USI5000-300	3	1 23/32	3 7/8	1 25/64	4 17/32	5.1180
USI5000-303	3 3/16	2 1/8	4 15/32	1 45/64	5 5/16	6.2988
USI5000-307	3 7/16	2 1/8	4 15/32	1 45/64	5 5/16	6.2988
USI5000-308	3 1/2	2 1/8	4 15/32	1 45/64	5 5/16	6.2988
USI5000-311	3 11/16	2 13/32	4 15/16	1 55/64	6	7.0861
USI5000-315	3 15/16	2 13/32	4 15/16	1 55/64	6	7.0861
USI5000-400	4	2 13/32	4 15/16	1 55/64	6	7.0861
USI5000-407	4 7/16	2 11/16	6 3/4	3 3/8	6 1/2	7.8740
USI5000-408	4 1/2	2 11/16	6 3/4	3 3/8	6 1/2	7.8740
USI5000-415	4 15/16	3 21/64	7 27/64	3 23/32	7	9.0551
USI5000-507	5 7/16	3 21/32	9 1/32	4 33/64	8 1/2	9.8419
USI5000-515	5 15/16	4 25/64	9 25/32	4 57/64	10	11.4167
USI5000-607	6 7/16	4 55/64	10 1/2	5 1/4	11	12.5976
USI5000-608	6 1/2	4 55/64	10 1/2	5 1/4	11	12.5976
USI5000-615	6 15/16	4 55/64	10 1/2	5 1/4	11	12.5976
USI5000-700	7	4 55/64	10 1/2	5 1/4	11	12.5976

Note:

- 1 1/8" - 4" bore sizes have a single-lock collar.
- 4 7/16" - 7" bore sizes have double-lock collars.

### Adapter Mount

Nomenclature	Bore (INCHES)	H	J	K	L	M (Nominal)
USI5000A-102	1 1/8					
USI5000A-103	1 3/16					
USI5000A-104	1 1/4	1 15/64	3 23/64	1	2 47/64	3.1493
USI5000A-106	1 3/8	1 15/64	3 23/64	1	2 47/64	3.1493
USI5000A-107	1 7/16	1 15/64	3 23/64	1	2 47/64	3.1493
USI5000A-108	1 1/2	1 15/64	3 23/64	1	2 47/64	3.1493
USI5000A-111	1 11/16	1 7/32	3 29/64	1 3/64	2 63/64	3.3462
USI5000A-112	1 3/4	1 7/32	3 29/64	1 3/64	2 63/64	3.3462
USI5000A-115	1 15/16	1 17/64	3 1/2	1 1/16	3 3/16	3.5430
USI5000A-200	2	1 17/64	3 1/2	1 1/16	3 3/16	3.5430
USI5000A-203	2 3/16	1 23/64	3 57/64	1 9/64	3 29/64	3.9367
USI5000A-207	2 7/16	1 11/16	4 5/16	1 5/16	3 63/64	4.7242
USI5000A-208	2 1/2	1 11/16	4 5/16	1 5/16	3 63/64	4.7242
USI5000A-211	2 11/16	1 23/32	4 31/64	1 25/64	4 25/64	5.1180
USI5000A-212	2 3/4	1 23/32	4 31/64	1 25/64	4 25/64	5.1180
USI5000A-215	2 15/16	1 23/32	4 31/64	1 25/64	4 25/64	5.1180
USI5000A-300	3	1 23/32	4 31/64	1 25/64	4 25/64	5.1180
USI5000A-303	3 3/16	2 1/8	5 35/64	1 45/64	5 15/32	6.2988
USI5000A-307	3 7/16	2 1/8	5 35/64	1 45/64	5 15/32	6.2988
USI5000A-308	3 1/2	2 1/8	5 35/64	1 45/64	5 15/32	6.2988
USI5000A-311	3 11/16	2 13/32	5 15/16	1 55/64	5 13/16	7.0861
USI5000A-315	3 15/16	2 13/32	5 15/16	1 55/64	5 13/16	7.0861
USI5000A-400	4	2 13/32	5 15/16	1 55/64	5 13/16	7.0861
USI5000A-407	4 7/16	2 11/16	6 27/64	2 5/64	6 11/32	7.8740
USI5000A-408	4 1/2	2 11/16	6 27/64	2 5/64	6 11/32	7.8740
USI5000A-415	4 15/16	3 21/64	7 1/8	2 27/64	7 13/64	9.0551
USI5000A-500	5	3 21/64	7 1/8	2 27/64	7 13/64	9.0551
USI5000A-507	5 7/16	3 21/32	7 35/64	2 39/64	7 47/64	9.8419
USI5000A-515	5 15/16	4 25/64	8 17/32	3 1/64	8 1/2	11.4167
USI5000A-607	6 7/16	4 55/64	9 3/8	3 5/16	9 11/16	12.5976
USI5000A-608	6 1/2	4 55/64	9 3/8	3 5/16	9 11/16	12.5976
USI5000A-615	6 15/16	4 55/64	9 3/8	3 5/16	9 11/16	12.5976
USI5000A-700	7	4 55/64	9 3/8	3 5/16	9 11/16	12.5976
USI5000A-708	7 1/2	5 15/64	10 13/32	3 19/32	11 7/64	14.1732
USI5000A-715	7 15/16	5 15/64	10 13/32	3 19/32	11 7/64	14.1732
USI5000A-800	8	5 15/64	10 13/32	3 19/32	11 7/64	14.1732

# Spherical Roller Bearing Life Calculations

This section outlines the formula used to select bearing size or calculate expected bearing life for USRB spherical roller bearings.

## Bearing Symbols for Spherical Life Calculations

- C = Basic Dynamic Rating (lbs.) 1,000,000 rev.
- P = Equivalent Radial Load (lbs.)
- L<sub>10</sub> = Rated Life (hrs.)
- F<sub>a</sub> = Applied Thrust Load
- F<sub>r</sub> = Applied Radial Load
- n = Speed RPM
- X = Radial Factor
- Y = Thrust Factor
- e = Geometry Ratio

## Spherical Roller Bearing Life Calculations

$$L_{10} = \left( \frac{C}{P} \right)^{10/3} \times \frac{16,667}{n}$$

Shock / Vibration Factor		Table 1
Steady Loading		1.0
Light Shock / Vibration		0.5
Moderate Shock / Vibration		0.3

Multiply the theoretical life by the above factors to determine adjusted theoretical life.

## Combined Load Calculation

1. Calculate F<sub>a</sub>/F<sub>r</sub> and compare the value to the “e” value found in Table 2. F<sub>a</sub>/F<sub>r</sub> must be less than 1.
2. Choose values for “X” and “Y” from Table 2.
3. Calculate equivalent load using the following equation:  
**P = XF<sub>r</sub> + YF<sub>a</sub>**
4. Calculate the expected L<sub>10</sub> life using the life equation on page 23.
5. Determine if the calculated L<sub>10</sub> meets application requirements.
6. If L<sub>10</sub> is not acceptable, select another bearing size as appropriate and recalculate the L<sub>10</sub> life. Continue this iterative process until an acceptable L<sub>10</sub> is obtained.

NOTE: Always use (1) fixed and (1) floating spherical roller bearing.

Max. thrust for adapter mount units is C/30 lbs.

## X & Y Values for Combined Loading Equation

Shaft Diameter	Basic Dynamic Rating C	Basic Static Rating C <sub>0</sub>	e	F <sub>a</sub> /F <sub>r</sub> ≤ e		F <sub>a</sub> /F <sub>r</sub> > e		Combined Static Load Factors	
				X	Y	X	Y	X <sub>0</sub>	Y <sub>0</sub>
1 1/8 – 1 1/2	20368	23609	0.34	1.0	2.0	0.67	2.9	1.0	1.9
1 11/16 – 1 3/4	22689	28021	0.32	1.0	2.1	0.67	3.2	1.0	2.1
1 15/16 – 2	23520	29918	0.31	1.0	2.2	0.67	3.2	1.0	2.1
2 3/16	28087	34981	0.30	1.0	2.3	0.67	3.4	1.0	2.2
2 7/16 – 2 1/2	44691	59535	0.31	1.0	2.2	0.67	3.3	1.0	2.2
2 11/16 – 3	47447	65610	0.29	1.0	2.3	0.67	3.4	1.0	2.3
3 3/16 – 3 1/2	72640	105628	0.29	1.0	2.3	0.67	3.5	1.0	2.3
3 11/16 – 4	96050	136151	0.30	1.0	2.3	0.67	3.4	1.0	2.2
4 7/16 – 4 1/2	111537	161283	0.30	1.0	2.3	0.67	3.4	1.0	2.2
4 15/16 – 5	158816	247307	0.32	1.0	2.1	0.67	3.2	1.0	2.1
5 7/16	196682	290447	0.33	1.0	2.0	0.67	3.0	1.0	2.0
5 15/16	261346	390391	0.35	1.0	1.9	0.67	2.9	1.0	1.9
6 7/16 – 7	334229	498544	0.35	1.0	1.9	0.67	2.9	1.0	1.9
7 1/2 – 8	363818	587106	0.35	1.0	1.9	0.67	2.9	1.0	1.9

Note: Emerson Power Transmission believes that the information provided above is true and accurate; however, individual applications may vary.

Thus, the information provided above cannot be relied upon as complete. The customer assumes all risk from the use thereof, and Emerson Power Transmission assumes no responsibility for any use of the foregoing information by its customers.

## Bearing Selection Chart

This chart may be used to select Sealmaster USRB Unitized Spherical Roller Bearings. Determine the operating speed and select the desired  $L_{10}$  hours. Then select a bearing from the chart with a load rating that is greater than or equal to the actual load. Loads in this chart give the indicated  $L_{10}$  hours and are calculated in accordance with ANSI/ABMA Standard 11 – Load Ratings and Fatigue Life for Roller Bearings. Areas designated by “-” exceed the maximum speed value. See table 4 on page 27 for maximum seal speeds.

*Bearings should operate at temperatures less than 200°F (94°C) and should not exceed 250°F (121°C) for intermittent operation. For temperatures outside of this range, consult Emerson Power Transmission Application Engineering.*

Series	Shaft Size	$L_{10}$ Hours	Revolutions per Minute																															
			50		100		150		250		500		750		1000		1500		1750		2000		2500		3000		3500		4000					
			5000	10000	30000	50000	100000	5000	10000	30000	50000	100000	5000	10000	30000	50000	100000	5000	10000	30000	50000	100000	5000	10000	30000	50000	100000	5000	10000	30000	50000	100000		
5107	1 1/8 1 3/16 1 1/4 1 3/8 1 7/16 1 1/2	5000	9039	7342	5964	6501	5577	4530	3680	3258	2989	2647	2527	2428	2271	2150	2647	3111	2989	2795	2647	2527	2428	2271	2150	2647	3111	2989	2795	2647	2527	2428		
		10000	7342	5964	4778	5281	4289	3798	3258	2647	2343	2150	1903	1817	1746	1633	1546	1476	1418	1326	1266	1217	1138	1077	1029	988	948	908	868	828	788	748		
		30000	5281	4289	3680	3258	2795	2271	2010	1844	1633	1559	1498	1401	1326	1266	1217	1138	1077	1029	988	948	908	868	828	788	748	708	668	628	588	548	508	
		50000	4530	3680	2989	2647	2271	1844	1633	1498	1326	1266	1217	1138	1077	1029	988	948	908	868	828	788	748	708	668	628	588	548	508	468	428	388	348	308
		100000	3680	2989	2271	1844	1633	1498	1326	1266	1217	1138	1077	1029	988	948	908	868	828	788	748	708	668	628	588	548	508	468	428	388	348	308	268	228
5111	1 11/16 1 3/4	5000	10069	8179	6643	7242	6213	5046	4468	4099	3630	3465	3329	3114	2948	2815	2704	2529	2395	2286	2197	2108	2019	1930	1841	1752	1663	1574	1485	1396	1307	1218	1129	
		10000	8179	6643	5457	5882	5046	4099	3630	3329	2948	2815	2704	2529	2395	2286	2197	2108	2019	1930	1841	1752	1663	1574	1485	1396	1307	1218	1129	1040	951	862	773	
		30000	5882	4778	3992	4231	3630	2948	2610	2395	2120	2025	1945	1819	1722	1644	1580	1516	1452	1388	1324	1260	1196	1132	1068	1004	940	876	812	748	684	620	556	492
		50000	5046	4099	3313	3630	3114	2529	2240	2054	1819	1737	1669	1561	1478	1411	1355	1291	1227	1163	1100	1036	972	908	844	780	716	652	588	524	460	396	332	268
		100000	4099	3329	2543	2948	2529	2054	1819	1669	1478	1411	1355	1268	1200	1146	1101	1037	973	909	845	781	717	653	589	525	461	397	333	269	205	141	77	13
5115	1 15/16 2	5000	10438	8478	6886	7507	6441	5231	4632	4249	3762	3592	3451	3228	3056	2918	2803	2622	2482	2370	2277	2184	2091	1998	1905	1812	1719	1626	1533	1440	1347	1254	1161	
		10000	8478	6886	5690	6098	5231	4249	3762	3451	3056	2918	2803	2622	2482	2370	2277	2184	2091	1998	1905	1812	1719	1626	1533	1440	1347	1254	1161	1068	975	882	789	
		30000	6098	4953	4057	4386	3762	3056	2706	2482	2198	2099	2016	1886	1785	1705	1638	1568	1498	1428	1358	1288	1218	1148	1078	1008	938	868	798	728	658	588	518	
		50000	5231	4249	3463	3762	3228	2622	2322	2130	1886	1800	1730	1618	1532	1462	1405	1348	1282	1216	1150	1084	1018	952	886	820	754	688	622	556	490	424	358	292
		100000	4249	3451	2665	3056	2622	2130	1886	1730	1532	1462	1405	1314	1244	1188	1141	1094	1048	1002	956	910	864	818	772	726	680	634	588	542	496	450	404	358
5203	2 3/16	5000	12465	10124	8224	8965	7691	6247	5532	5074	4493	4290	4122	3855	3650	3485	3348	3131	2964	2830	2720	2610	2500	2390	2280	2170	2060	1950	1840	1730	1620	1510	1400	
		10000	10124	8224	6724	7282	6247	5074	4493	4122	3650	3485	3348	3131	2964	2830	2720	2610	2500	2390	2280	2170	2060	1950	1840	1730	1620	1510	1400	1290	1180	1070	960	
		30000	7282	5915	4915	5237	4493	3650	3232	2964	2625	2506	2408	2252	2132	2036	1940	1844	1748	1652	1556	1460	1364	1268	1172	1076	980	884	788	692	596	500	404	308
		50000	6247	5074	4074	4493	3855	3131	2772	2543	2252	2150	2066	1932	1829	1746	1663	1580	1497	1414	1331	1248	1165	1082	1000	917	834	751	668	585	502	419	336	253
		100000	5074	4122	3172	3650	3131	2543	2252	2066	1829	1746	1678	1569	1486	1419	1352	1285	1218	1151	1084	1017	950	883	816	749	682	615	548	481	414	347	280	213
5207	2 7/16 2 1/2	5000	19833	16110	13085	14265	12238	9940	8802	8074	7149	6826	6558	6133	5807	5545	5327	4982	4717	4488	4270	4052	3834	3616	3398	3180	2962	2744	2526	2308	2090	1872	1654	
		10000	16110	13085	10865	11586	9940	8074	7149	6558	5807	5545	5327	4982	4717	4488	4270	4052	3834	3616	3398	3180	2962	2744	2526	2308	2090	1872	1654	1436	1218	1000	782	
		30000	11586	9411	7765	8333	7149	5807	5142	4717	4177	3988	3831	3583	3392	3191	2990	2789	2588	2387	2186	1985	1784	1583	1382	1181	980	779	578	377	176	-	-	-
		50000	9940	8074	6558	7149	6133	4982	4411	4047	3583	3421	3287	3074	2910	2749	2588	2427	2266	2105	1944	1783	1622	1461	1300	1139	978	817	656	495	334	173	-	
		100000	8074	6558	5042	5807	4982	4047	3583	3287	2910	2779	2670	2497	2364	2231	2098	1965	1832	1699	1566	1433	1300	1167	1034	901	768	635	502	369	236	103	-	
5215	2 11/16 2 3/4 2 15/16 3	5000	21056	17103	13892	15144	12992	10553	9344	8572	7590	7247	6962	6512	6165	5886	5655	5289	5008	4780	4552	4324	4096	3868	3640	3412	3184	2956	2728	2500	2272	2044		
		10000	17103	13892	11482	12301	10553	8572	7590	6962	6165	5886	5655	5289	5008	4780	4552	4324	4096	3868	3640	3412	3184	2956	2728	2500	2272	2044	1816	1588	1360	1132	904	
		30000	12301	9991	8171	8847	7590	6165	5459	5008	4434	4234	4067	3804	3602	3400	3198	2996	2794	2592	2390	2188	1986	1784	1582	1380	1178	976	774	572	370	168	-	
		50000	10553	8572	6952	7590	6512	5289	4683	4296	3804	3632	3489	3264	3090	2864	2690	2516	2290	2116	1942	1768	1594	1420	1246	1072	898	724	550	376	202	28	-	
		100000	8572	6962	5352	6165	5289	4296	3804	3489	3090	2950	2834	2651	2510	2327	2186	2045	1862	1721	1580	1439	1298	1157	1016	875	734	593	452	311	170	28	-	
5307	3 3/16 3 7/16 3 1/2	5000	32237	26184	21268	23185	19891	16157	14306	13123	11620	11095	10659	9969	9444	8919	8394	7704	7179	6654	6129	5604	5079	4554	4029	3504	2979	2454	1929	1404	879	354	-	
		10000	26184	21268	17352	18832	16157	13123	11620	10659	9439	9012	8658	8098	7623	7148	6673	6198	5723	5248	4773	4298	3823	3348	2873	2398	1923	1448	973	498	23	-	-	
		30000	18832	15297	12762	13545	11620	9439	8358	7666	6788	6482	6227	5824	5561	5342	5123	4904	4685	4466	4247	4028	3809	3590	3371	3152	2933	2714	2495	2276	2057	1838	1619	1400
		50000	16157	13123	10865	11620	9969	8098	7170	6577	5824	5561	5342	5123	4904	4685	4466	4247	4028	3809	3590	3371	3152	2933	2714	2495	2276	2057	1838	1619	1400	1181	962	743
		100000	13123	10659	8195	9439	8098	6577	5824	5342	4730	4517	4339																					

## Seal Speed

This chart displays maximum speed rating for USRB seals. Values in the table represent speeds at ideal conditions. Other application factors may reduce the speed rating of a bearing.

- Speed limits evaluated at a load of  $C/10$ .
- For speeds outside of those listed in this table, consult Emerson Power Transmission Application Engineering.

Seal Speed <span style="float: right;">Table 4</span>		
Shaft Size	Felt	Contact
1 1/8 - 1 1/2	4000	3000
1 11/16 - 1 3/4	4000	2750
1 15/16 - 2	4000	2500
2 3/16	3750	2200
2 7/16 - 2 1/2	3250	1750
2 11/16 - 3	3000	1600
3 3/16 - 3 1/2	2500	1350
3 11/16 - 4	2250	1200
4 7/16 - 4 1/2	2000	1100
4 15/16 - 5	1750	900
5 7/16 - 5 1/2	1500	900
5 15/16	1300	800
6 7/16 - 7	1200	750
7 1/2 - 8	1100	750

## LINEAR SHAFT EXPANSION

For applications in which bearing shaft expansion is larger than the support structure expansion, this expansion must be taken into account. The change in length can be determined for steel shafts using the formula  $0.0000063 \times \text{Shaft Length (Inches)} \times \text{Temperature Change (Degrees F)}$ . Temperature change is defined as the maximum temperature difference between the shaft and bearing support structure.

To allow for linear shaft expansion, some applications will require the bearing(s) to be of expansion type. Before installation, make certain proper linear shaft expansion is accounted for. Expansion units should be placed in a location where relative movement between the bearing insert and the housing can be tolerated. For most applications using expansion-type units, the fixed unit (non-expansion unit) is placed at the drive end of the shaft. Use Table 7 to determine if the housing unit will allow the necessary expansion. If the application requires additional expansion, consult engineering.

Note: It is recommended that applications using adapter mount units utilize one expansion unit in conjunction with one non-expansion unit. Failure to utilize one expansion and one non-expansion unit could result in reduced bearing performance.

**Notice: NOT PROVIDING EXPANSION WHERE NECESSARY MAY RESULT IN UNDESIRABLE LOADS, REDUCING THE LIFE OF THE BEARING!**

Shaft Tolerance for Collar Mount Bearings <span style="float: right;">Table 5</span>	
Nominal Shaft Diameter	Tolerances (INCHES)
1 1/8 - 2	-0.0005
2 3/16 - 4	-0.0010
4 7/16 - 5 15/16	-0.0015
6 7/16 - 7	-0.0020

Shaft Tolerance for Adapter Mount Bearings <span style="float: right;">Table 6</span>	
Nominal Shaft Diameter	Tolerances (INCHES)
1 1/8 - 2	-0.003
2 3/16 - 4	-0.004
4 7/16 - 5 15/16	-0.005
6 7/16 - 8	-0.006

Housing Expansion <span style="float: right;">Table 7</span>		
Nominal Shaft Diameter	Collar Mount (INCHES)	Adapter Mount (INCHES)
1 1/8 - 1 1/2	3/16	5/32
1 11/16 - 1 3/4	1/4	7/32
3 11/16 - 4	5/16	1/4
4 7/16 - 8	3/8	9/32

Split Housing Cap Bolt Torque <span style="float: right;">Table 8</span>		
Shaft Size (INCHES)	Inch-Pounds	Foot-Pounds
5 7/16 - 6 1/2	3190	265
6 15/16 - 8	7200	600

Collar Mount Setscrew Information <span style="float: right;">Table 9</span>			
Shaft Size (INCHES)	Hex Size (INCHES)	Inch-Pounds	Foot-Pounds
1 1/8 - 1 3/4	5/32	165	14
1 15/16 - 2 1/2	3/16	295	25
2 11/16 - 3 1/2	1/4	655	55
3 11/16 - 4 1/2	5/16	1435	120
4 15/16 - 5 15/16	3/8	2150	180
6 7/16 - 7	1/2	5130	428

Adapter Mount Cap Screw Information <span style="float: right;">Table 10</span>			
Nominal Shaft Diameter	Inch-Pounds	Hex Size (INCHES)	# Cap Screws
1 1/8 - 1 1/2	45	1/8	3
1 11/16 - 1 3/4	40	1/8	3
1 15/16 - 2	30	1/8	3
2 3/16	45	1/8	3
2 7/16 - 2 1/2	60	1/8	4
2 11/16 - 3	55	1/8	4
3 3/16 - 3 1/2	80	3/16	4
3 11/16 - 4	80	3/16	4
4 7/16 - 4 1/2	115	3/16	4
4 15/16 - 5	130	3/16	6
5 7/16 - 5 1/2	115	3/16	6
5 15/16	175	3/16	8
6 7/16 - 7	225	1/4	8
7 1/2 - 8	275	1/4	8

# LUBRICATION

Lubricant is a basic element in rolling element bearings. It is as essential to proper operation as are the races and rolling elements. Oil provides a separating layer between rolling elements and raceways and lubricates the sliding surfaces between the rolling elements and retainer. This lubrication layer eliminates or minimizes metal-to-metal contact and distributes stresses. Lubrication can also provide protection against corrosion, a barrier to contamination, and dissipation of heat.

## Lubricant

All Sealmaster USRB Unitized Spherical Roller Bearings are delivered with a high-quality lithium-complex base grease with an EP additive. The bearing is ready for use with no initial lubrication required. The grease is a lithium-complex base mineral oil, NLGI Grade 2 consistency, with a base oil viscosity of ISO VG 220.

Compatibility of grease is critical; therefore, consult with Emerson Power Transmission Application Engineering and your grease supplier to review grease compatibility. For best performance it is recommended to relubricate with lithium-complex thickened grease with a comparable NLGI consistency and base oil type and viscosity.

Lubricatable Sealmaster bearings are supplied with grease fittings or zerks for ease of lubrication with hand or automatic grease guns. Always wipe the fitting and grease nozzle clean.

**Notice: If possible, it is recommended to lubricate the bearing while rotating, until grease purge is seen from the seals. If this is not an option due to safety reasons, follow the alternate lubrication procedure below.**

Alternate Lubrication Procedure: Stop rotating equipment. Add one-half the recommended amount shown in Table 11. Start the bearing and run for a few minutes. Stop bearing and add the second half of the recommended amount. A temperature rise after lubrication, sometimes 30°F (17°C), is normal. Bearings should operate at temperatures less than 200°F (94°C) and should not exceed 250°F (121°C) for intermittent operation. For lubrication guide see Table 12.

*Note: The tables below state general lubrication guides and are intended as suggested or starting points only. For best results, specific applications should be monitored regularly and lubrication intervals and amounts adjusted accordingly.*

Shaft Size (INCHES)	Grease Charge (OUNCES)
1 1/8 - 1 1/2	0.2
1 11/16 - 1 3/4	0.2
1 15/16 - 2	0.25
2 3/16	0.4
2 7/16 - 2 1/2	0.6
2 11/16 - 3	0.75
3 3/16 - 3 1/2	1.2
3 11/16 - 4	2
4 7/16 - 4 1/2	2.75
4 15/16 - 5	6.1
5 7/16 - 5 1/2	6.1
5 15/16	10.6
6 7/16 - 7	13.9
7 1/2 - 8	17.6

Environment	Temperature (°F)	Speed (% CATALOG MAX)	Frequency
Dirty	-20 to 250	0 - 100 %	Daily to 1 week
		0 - 25%	4 to 10 months
Clean	-20 to 125	26 - 50%	1 to 4 months
		51 - 75%	1 week to 1 month
		76 - 100%	Daily to 1 week
	125 to 175	0 - 25%	2 to 6 weeks
		26 - 50%	1 week to 1 month
		51 - 75%	Daily to 1 week
175 to 250	76 - 100%	Daily to 1 week	
	0 - 100 %	Daily to 1 week	

Note: See table 4 on page 27 for maximum seal speeds. Refer to back cover for relevant disclaimer.

## USRB Vibration Analysis

The following equations are used to calculate the fundamental frequencies for Sealmaster USRB Unitized Spherical Roller Bearings.

- All information can be linked to three factors:
  - Shaft size
  - Unit number
  - Insert number

For USRB5000-207-C, the shaft size is 2 7/16".

For USI5000-207-C the shaft size is 2 7/16".

- Use the information obtained from Step 1 to select the vibration geometry information (R, I, O and F) from Table 13.

- Use this information to calculate the fundamental bearing frequencies:
  - Roller Spin Frequency (Hz) = R x RPM
  - Inner Roller Pass Frequency (Hz) = I x RPM
  - Outer Roller Pass Frequency (Hz) = O x RPM
  - Fundamental Train Frequency (Hz) = F x RPM

## Bearing Symbols for Vibration Analysis

- RPM – Shaft Speed (Revolutions per Minute)
- R – Roller Spin Frequency Factor
- I – Inner Roller Pass Frequency Factor
- O – Outer Roller Pass Frequency Factor
- F – Fundamental Train Frequency Factor

Shaft Size (INCHES)	Factor for Roller Spin R	Factor for Inner Roller Pass I	Factor for Outer Roller Pass O	Factor for F.T.F. F
1 1/8 - 1 1/2	0.0977	0.1549	0.1117	0.0070
1 11/16 - 1 3/4	0.1077	0.1722	0.1278	0.0071
1 15/16 - 2	0.1151	0.1804	0.1363	0.0072
2 3/16	0.1106	0.1717	0.1283	0.0071
2 7/16 - 2 1/2	0.1105	0.1812	0.1354	0.0071
2 11/16 - 3	0.1204	0.1983	0.1517	0.0072
3 3/16 - 3 1/2	0.1205	0.1889	0.1444	0.0072
3 11/16 - 4	0.1088	0.1816	0.1351	0.0071
4 7/16 - 4 1/2	0.1138	0.1806	0.1360	0.0072
4 15/16 - 5	0.1171	0.1894	0.1439	0.0072
5 7/16 - 5 1/2	0.1037	0.1730	0.1270	0.0071
5 15/16	0.1009	0.1735	0.1265	0.0070
6 7/16 - 7	0.1020	0.1733	0.1267	0.0070
7 1/2 - 8	0.1115	0.1809	0.1357	0.0071

## MOUNTING COLLAR MOUNT UNITS

### 1. INSPECT SHAFT AND BORE

- Shaft should be within tolerance range shown in Table 5, page 28, clean and free of nicks and burrs.
- Mount bearings on unused section of shafting or repair/replace as required.
- Inspect shaft and bearing bore for debris or contaminants. Wipe clean as necessary.

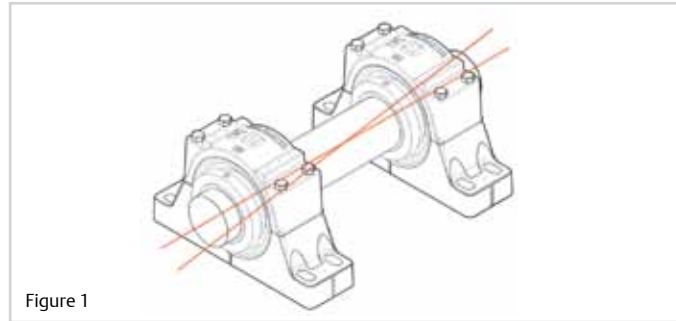


Figure 1

### 2. CHECK SUPPORT SURFACES

- Make sure housing base and support surfaces are clean and free from nicks and burrs.
- If the housing elevation is adjusted with shims, these must cover the entire contact area between the housing and the support surface.

### 3. INSTALL UNIT

- Keep weight off bearing during mounting.
- Slide unit onto shaft by pushing on inner ring.
- If difficult to install, use a piece of emery cloth to reduce high spots on shaft.
- Do not hammer on any component of the bearing and/or the shaft.
- Split housings have the provision for a lifting lug. If used, this provision is only intended to support the weight of the housed bearing assembly.

### 4. FASTEN UNIT IN PLACE

- Install mounting bolts and check bearing alignment; align units as closely as possible.
- These bearings are designed for maximum permissible misalignment of +/- 2°. Installation, handling or operation of the bearing in excess of the maximum permissible misalignment of +/- 2° can cause reduction in bearing performance, resulting in equipment failure and/or personal injury.
- Once alignment is within the allowable range, tighten mounting bolts to recommended fastener torque.
- Check shaft for freedom of rotation by rotating shaft by hand in both directions.

### 5. POSITION INSERT

- If expansion unit is used, it must be located in the housing to allow axial shaft expansion and/or contraction.
- Position bearing insert to maximize the axial expansion in the desired direction.
- It may be necessary to unload the bearing while positioning the bearing insert.

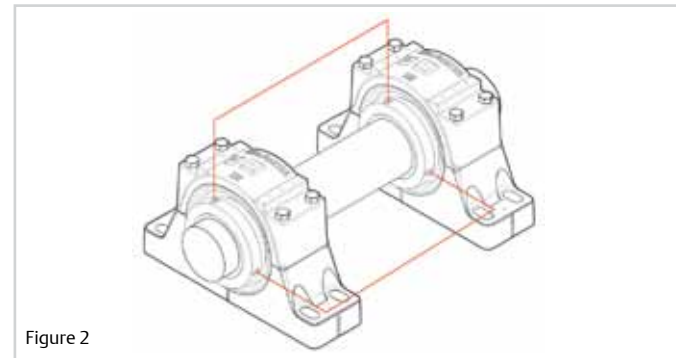


Figure 2

### 6. TIGHTEN SETSCREWS

- Setscrews in multiple bearing applications should be aligned as seen in Figure 2 above. Setscrews that are not properly aligned can induce shaft misalignment between two bearings.
- Step 1: Torque first setscrew to  $\frac{1}{2}$  recommended torque (Table 9, page 28).
- Step 2: Torque second setscrew to full recommended torque (Table 9, page 28).
- Step 3: Torque first setscrew to full recommended torque (Table 9, page 28).
- Double-lock collar mount units: Repeat steps 1 to 3 on second lock collar.
- Rotate shaft by hand to make sure it turns smoothly.

## MOUNTING ADAPTER MOUNT UNITS

### 1. INSPECT SHAFT AND BORE

- Shaft should be within tolerance range shown in Table 6, page 28, clean and free of nicks and burrs.
- Mount bearings on unused section of shafting or repair/replace as required.
- Inspect shaft and bearing bore for debris or contaminants. Wipe clean as necessary.

**Warning: Do not apply grease, oil or anti-seize compound to the tapered surfaces, bore and shafting. If any of these substances are applied, equipment failure and personal injury may result.**

### 2. CHECK SUPPORT SURFACES

- Make sure housing base and support surfaces are clean and free from nicks and burrs.
- If the housing elevation is adjusted with shims, these must cover the entire contact area between the housing and the support surface.

### 3. INSTALL UNIT

- It is recommended that applications using adapter mount units utilize one expansion unit in conjunction with one non-expansion unit.
- Failure to utilize one expansion and one non-expansion unit could result in reduced bearing performance.
- Keep weight off bearing during mounting.
- Slide unit onto shaft by pushing on inner ring.
- If difficult to install, use a piece of emery cloth to reduce high spots on shaft.
- Do not hammer on any component of the bearing and/or the shaft.
- Split housings have the provision for a lifting lug. If used, this provision is only intended to support the weight of the housed bearing assembly.

### 4. FASTEN UNIT IN PLACE

- Install mounting bolts and check bearing alignment; align bearing units as closely as possible.
- These bearings are designed for maximum permissible misalignment of +/- 2°. Installation, handling or operation of the bearing in excess of the maximum permissible misalignment of +/- 2° can cause reduction in bearing performance, resulting in equipment failure and/or personal injury.
- Once alignment is within the allowable range, tighten mounting bolts to recommended fastener torque.
- Check shaft for freedom of rotation by rotating shaft by hand in both directions.

### 5. POSITION INSERT

- If an expansion unit is used, the bearing must be located in the housing.
- If the direction of shaft growth is in the direction seen in Figure 3, align the bearing as shown.
- If the direction of shaft growth is opposite to that shown in Figure 3, center the insert in the housing.

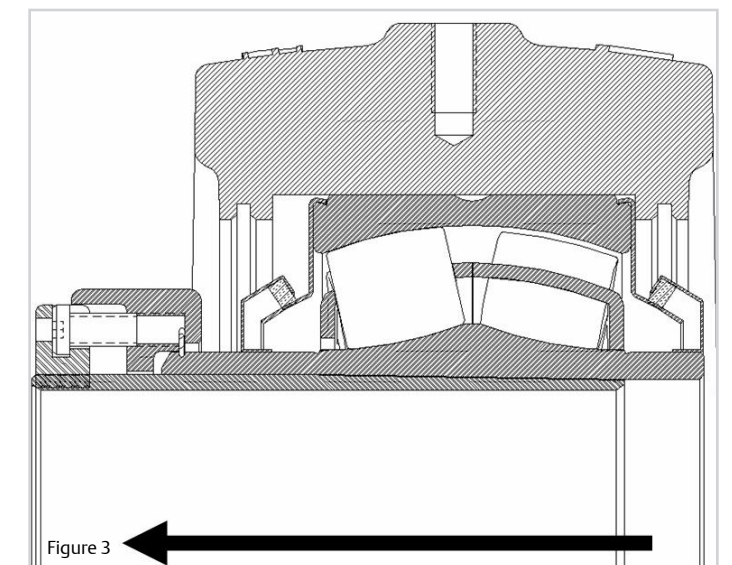


Figure 3

## MOUNTING ADAPTER MOUNT UNITS (cont'd.)

### 6. SHAFT LOCK

- Step 1: Tighten cap screws in specified order as seen in Figure 4; continue tightening until all cap screws have become snug.
- Step 2: Using a torque wrench, tighten each screw to  $\frac{1}{2}$  the appropriate torque value (Table 10, page 28).
- Step 3: In the same order, repeat the procedure. Tightening each screw to the full appropriate torque value (Table 10, page 28).
- Step 4: Follow the same pattern and verify that each cap screw has met the appropriate torque value and all cap screws have achieved equivalent resistance.
- Step 5: Continue to tighten all other bearings in the same fashion, continuously checking for freedom of rotation.

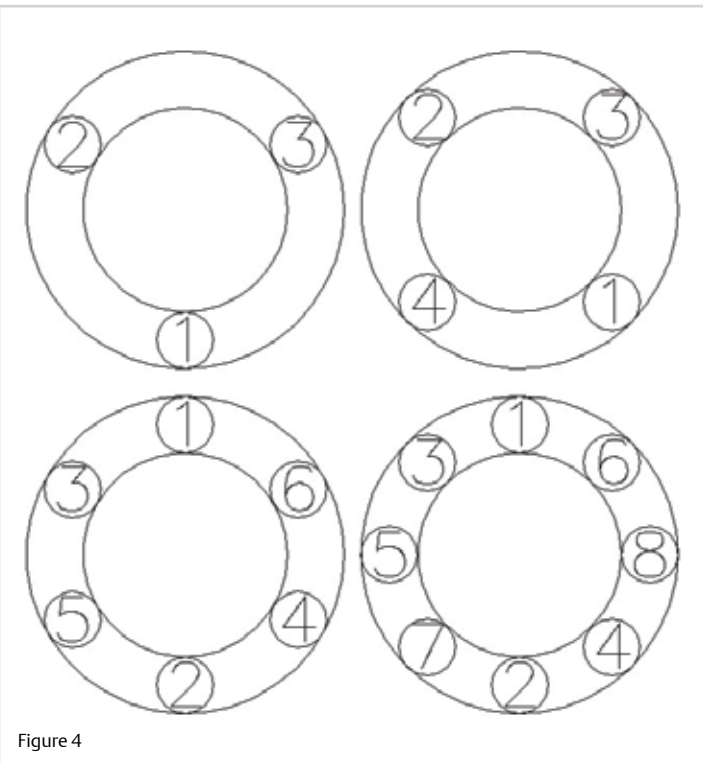


Figure 4

## REPLACING EXISTING SEALMASTER INSERTS

### REMOVAL:

#### 1. REMOVE HOUSING

- **TWO-PIECE HOUSINGS**

- Remove cap bolts.
- Remove top half of housing.

- **ONE-PIECE HOUSINGS**

- Remove snap ring and spacer ring from housing bore.
- Do not lose snap ring or spacer ring.

#### 2. REMOVE BEARING FROM SHAFT

- Setscrew units: Loosen setscrews and slide bearing off shaft.
- Adapter mount units: Loosen cap screws in the specified order as seen in Figure 4 and slide the bearing off the shaft.
- **DO NOT HAMMER ON ANY COMPONENT OF THE BEARING AND/OR SHAFT.**

### REPLACEMENT:

#### 1. LOAD NEW INSERT

- Shaft should be within applicable tolerance range shown in Table 5 or 6, page 28, clean and free of nicks and burrs.
- Mount bearings on unused section of shafting or repair/replace as required.
- Inspect shaft, bearing bore, housing bore and spacer ring for debris or contaminants. Wipe clean as necessary.

**Warning:** Do not apply grease, oil or anti-seize compound to the tapered surfaces, bore and shafting. If any of these substances are applied, equipment failure and personal injury may result.

#### 2. SECURE IN HOUSING

- Be sure to check the bearing for proper alignment; align bearing units as closely as possible.
- These bearings are designed for maximum permissible misalignment of +/- 2°. Installation, handling or operation of the bearing in excess of the maximum permissible misalignment of +/- 2° can cause reduction in bearing performance, resulting in equipment failure and/or personal injury.
- **TWO-PIECE HOUSINGS**
  - Install top half of the housing; ensure alignment between location pin and location hole.
  - Tighten down the cap bolts to the recommended torque in Table 8, page 28.
- **ONE-PIECE HOUSINGS**
  - Replace spacer ring into bearing housing.
  - Replace snap ring into snap-ring groove in bearing housing.

#### 3. REFER TO STEPS 5 AND 6 FROM PREVIOUS INSTALLATION SECTIONS FOR THE RESPECTIVE SHAFT LOCKING MECHANISM.

**Refer to back cover for relevant disclaimer.**



**Browning**  
Helical Speed  
Reducers & Gearmotors



**SEALMASTER**  
Mounted Ball Bearings



**Morse**  
Clutches



**Browning**  
Shaft Mount Reducers



**SEALMASTER**  
Mounted Roller Bearings



**ROLLWAY**  
Roller Bearings



**Browning**  
V-Belt Drives



**Morse**  
Chain



**KOP-FLEX**  
Couplings



**Browning**  
Right Angle  
Bevel Gearboxes



**Morse**  
Worm Gearing



**McGILL**  
Precision Bearings

## Emerson Power Transmission Customer Service

Telephone 1-800-626-2120  
Fax 1-800-262-3292

Catalog USRB  
ID# MC08005 • Form 9200 • Printed in U.S.

### APPLICATION CONSIDERATIONS

The proper selection and application of power transmission products and components, including the related area of product safety, is the responsibility of the customer. Operating and performance requirements and potential associated issues will vary appreciably depending upon the use and application of such products and components. The scope of the technical and application information included in this publication is necessarily limited. Unusual operating environments and conditions, lubrication requirements, loading supports, and other factors can materially affect the application and operating results of the products and components and the customer should carefully review its requirements. Any technical advice or review furnished by Emerson Power Transmission Corporation and its divisions with respect to the use of products and components is given in good faith and without charge, and Emerson assumes no obligation or liability for the advice given, or results obtained, all such advice and review being given and accepted at customer's risk.

For a copy of our Standard Terms and Conditions of Sale, Disclaimers of Warranty, Limitation of Liability and Remedy, please contact Emerson Power Transmission Customer Service at 1-800-626-2120. These terms and conditions of sale, disclaimers and limitations of liability apply to any person who may buy, acquire or use an Emerson Power Transmission Corporation product referred to herein, including any person who buys from a licensed distributor of these branded products.

Emerson, Emerson Power Transmission and Sealmaster are trademarks of Emerson Electric Co. or one of its affiliated companies.  
©2008 Emerson Power Transmission. All Rights Reserved. Printed in USA.